

Anti-LIMA1 Antibody

Catalog Number: A05231

About LIMA1

The Lim domain and actin-binding protein 1 (LIMA1) is cytoskeleton-associated protein that inhibits actin filament depolymerization and cross-links filaments in bundles and is downregulated in some cancer cell lines (1,2). LIMA1 is also a key molecule linking the cadherin-catenin complex to the actin cytoskeleton (3). Recent studies have shown that EGF activates ERK1/2-dependent phosphorylation, ubiquitination and degradation of LIMA1, leading to increased invasiveness and metastasis of metastatic prostate cancer models (4).

Overview

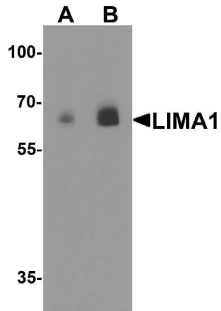
| | |
|----------------------|--|
| Product Name | Anti-LIMA1 Antibody |
| Reactive Species | Human |
| Description | Boster Bio Anti-LIMA1 Antibody (Catalog # A05231). Tested in ELISA, WB, IHC-P, IF applications. This antibody reacts with Human. |
| Application | ELISA, IF, IHC-P, WB |
| Clonality | Polyclonal |
| Formulation | LIMA1 antibody is supplied in PBS containing 0.02% sodium azide. |
| Storage Instructions | LIMA1 antibody can be stored at 4°C for three months and -20°C, stable for up to one year. |
| Host | Rabbit |
| Uniprot ID | Q9UHB6 |

Technical Details

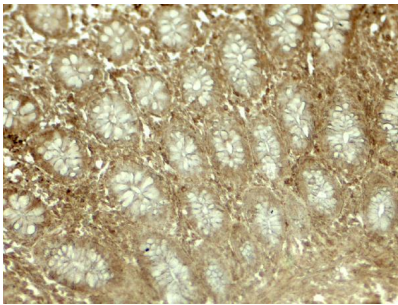
| | |
|----------------------------|--|
| Immunogen | LIMA1 antibody was raised against an 18 amino acid peptide near the amino terminus of human LIMA1. The immunogen is located within amino acids 230 - 280 of LIMA1. |
| Predicted Reactive Species | Mouse, Pig |
| Cross Reactivity | LIMA1 antibody is human specific. At least four isoforms of LIMA1 are known to exist; this antibody will only detect the three largest isoforms. |
| Isotype | IgG |
| Form | Liquid |
| Concentration | 1 mg/mL |
| Purification | LIMA1 antibody is affinity chromatography purified via peptide column. |
| Suggested Dilutions | LIMA1 antibody can be used for detection of LIMA1 by Western blot at 0.5 - 1 ug/ml. Antibody can |

also be used for immunohistochemistry starting at 5 ug/mL. For immunofluorescence start at 20 ug/mL.
Antibody validated: Western Blot in human samples; Immunohistochemistry in human samples and Immunofluorescence in human samples. All other applications and species not yet tested. Optimal dilutions for each application should be determined by the researcher.

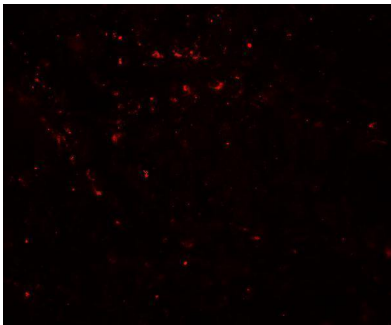
Anti-LIMA1 Antibody (A05231) Images



Western blot analysis of LIMA1 in human colon tissue lysate with LIMA1 antibody at (A) 0.5 and (B) 1 ug/ml.



Immunohistochemistry of LIMA1 in human colon tissue with LIMA1 antibody at 5 ug/mL.



Immunofluorescence of LIMA1 in human colon tissue with LIMA1 antibody at 20 ug/mL.

Submit a product review to [Biocompare.com](https://www.biocompare.com)

Submit a review of this product to [Biocompare.com](https://www.biocompare.com) to receive a \$20 Amazon.com giftcard! Your reviews help your fellow scientists make the right decisions. Thank you for your contribution.



Anti-LIMA1 Antibody

For Research Use Only. Not for use in diagnostic procedures.