

Anti-AFAP1 Antibody

Catalog Number: A05258

About AFAP1

The actin filament-associated protein AFAP1 (AFAP-110) is an actin cross-linking protein first identified as a substrate of the viral oncogene v-Src. AFAP1 has a fundamental role in actin cytoskeleton arrangement. It contains a carboxyterminal actin-binding domain that directly binds to F-actin and serves as an adaptor protein in the regulation of SRC and PKC signal transduction by several functional domains, including 2 pleckstrin homology (PH) domains, a Src homology 3-binding (SH3-binding) motif, and several SH2-binding motifs. It is overexpressed in prostate carcinoma and contributes to tumor growth by regulating cell-matrix adhesions and migration in the cancer cells. AFAP1 represent a possible therapeutic target for controlling tumorigenesis and metastasis.

Overview

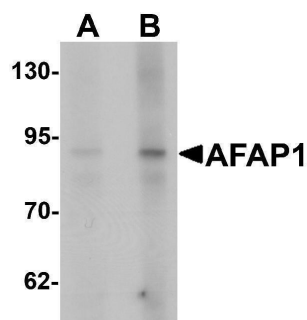
Product Name	Anti-AFAP1 Antibody
Reactive Species	Human, Mouse
Description	Boster Bio Anti-AFAP1 Antibody (Catalog # A05258). Tested in ELISA, WB applications. This antibody reacts with Human, Mouse.
Application	ELISA, WB
Clonality	Polyclonal
Formulation	AFAP1 Antibody is supplied in PBS containing 0.02% sodium azide.
Storage Instructions	AFAP1 antibody can be stored at 4°C for three months and -20°C, stable for up to one year. Avoid repeated freeze-thaw cycles. Antibodies should not be exposed to prolonged high temperatures.
Host	Rabbit
Uniprot ID	Q8N556

Technical Details

Immunogen	AFAP1 antibody was raised against an 18 amino acid synthetic peptide near the amino terminus of human AFAP1. The immunogen is located within amino acids 30 - 80 of AFAP1.
Predicted Reactive Species	Rat
Cross Reactivity	Monomer and homomultimer of AFAP1 are known to exist; AFAP1 antibody is predicted to not cross-react with other AFAP family members.
Isotype	IgG
Form	Liquid
Concentration	1 mg/mL

Purification	AFAP1 Antibody is affinity chromatography purified via peptide column.
Suggested Dilutions	AFAP1 antibody can be used for detection of AFAP1 by Western blot at 1 - 2 ug/mL. Antibody validated: Western Blot in human samples. All other applications and species not yet tested. Optimal dilutions for each application should be determined by the researcher.

Anti-AFAP1 Antibody (A05258) Images



Western blot analysis of AFAP1 in HeLa cell lysate with AFAP1 antibody at (A) 1 and (B) 2 ug/mL.

Submit a product review to Biocompare.com

Submit a review of this product to Biocompare.com to receive a \$20 Amazon.com giftcard! Your reviews help your fellow scientists make the right decisions. Thank you for your contribution.



Anti-AFAP1 Antibody

For Research Use Only. Not for use in diagnostic procedures.