

Anti-ILPIP STRADB Antibody

Catalog Number: A05271

About STRADB

ILPIP (ILP-interacting protein) has recently been shown to interact with XIAP, a member of the IAP (Inhibitor of Apoptosis) protein family. Together, these two proteins synergistically activate the TAK1/JNK1 signal transduction pathway, which acts to protect against the interleukin-1beta converting enzyme of Fas-induced apoptosis. This protein was independently isolated and characterized as polyploidy-associated protein kinase (PAPK), a member of the Ste20/germinal center kinase family that modulates cytoskeletal organization and cell survival, suggesting that its protective role may be a function of its kinase activity. Although two mRNA sequences have been isolated, only the shorter isoform has been observed.

Overview

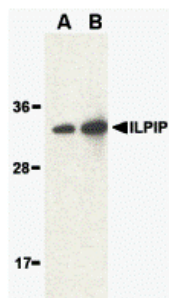
Product Name	Anti-ILPIP STRADB Antibody
Reactive Species	Human, Mouse, Rat
Description	Boster Bio Anti-ILPIP STRADB Antibody (Catalog # A05271). Tested in ELISA, WB, IHC-P applications. This antibody reacts with Human, Mouse, Rat.
Application	ELISA, IHC-P, WB
Clonality	Polyclonal
Formulation	ILPIP Antibody is supplied in PBS containing 0.02% sodium azide.
Storage Instructions	ILPIP antibody can be stored at 4°C for three months and -20°C, stable for up to one year. Avoid repeated freeze-thaw cycles. Antibodies should not be exposed to prolonged high temperatures.
Host	Rabbit
Uniprot ID	Q9C0K7

Technical Details

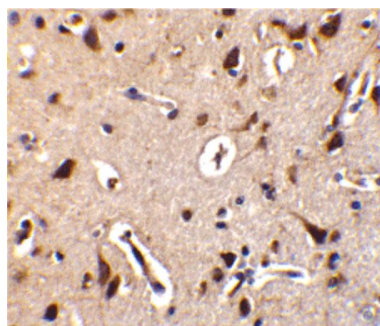
Immunogen	ILPIP antibody was raised against a synthetic peptide corresponding to amino acids near the center of human ILPIP. The immunogen is located within amino acids 280 - 330 of ILPIP.
Predicted Reactive Species	Bovine
Cross Reactivity	Depending on cell lines or tissues used, other cleavage products may be observed.
Isotype	IgG
Form	Liquid
Concentration	1 mg/mL

Purification	ILPIP Antibody is affinity chromatography purified via peptide column.
Suggested Dilutions	<p>Dilute the sample so that the expected range of concentrations fall within the detection range of this kit.</p> <p>If the expected range of concentration is unknown, a pilot test should be conducted to decide the optimal dilution ratio for your samples.</p> <p>Some PubMed article(s) citing the expression level of this target are as follows:</p> <p>Boster Bio's internal QC testing used:</p> <p>ILPIP antibody can be used for the detection of ILPIP by Western blot at 1 to 2 ug/mL. Antibody can also be used for immunohistochemistry starting at 10 ug/mL.</p> <p>Antibody validated: Western Blot in human samples and Immunohistochemistry in human samples.</p> <p>All other applications and species not yet tested. Optimal dilutions for each application should be determined by the researcher.</p>

Anti-ILPIP STRADB Antibody (A05271) Images



Western blot analysis of ILPIP in human brain lysate with ILPIP antibody at (A) 1 and (B) 2 ug/mL.



Immunohistochemistry of ILPIP in human brain tissue with ILPIP antibody at 10 ug/mL.

Submit a product review to Biocompare.com

Submit a review of this product to Biocompare.com to receive a \$20 Amazon.com giftcard! Your reviews help your fellow scientists make the right decisions. Thank you for your contribution.



Anti-ILPIP STRADB Antibody