

## Anti-Ribonuclease T2 RNASET2 Antibody

Catalog Number: A05281

### About RNASET2

RNASET2 is a novel member of the Rh/T2/S-glycoprotein class of extracellular ribonucleases. It is a single copy gene that maps to 6q27, a region associated with human malignancies and chromosomal rearrangement, and has been suggested to function as a tumor suppressor protein. Its expression is suppressed in Human T-cell Leukemia Virus type 1 (HTLV-1) infected cells following the binding of the HTLV-1 Tax protein to the RNASET2 promoter. As Adult T-cell leukemia (ATL) is one of the primary diseases caused by HTLV-1 infection, a reduction in the level of RNASET2 by Tax may play a role in ATL development.

### Overview

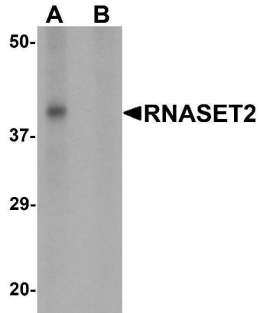
Product Name	Anti-Ribonuclease T2 RNASET2 Antibody
Reactive Species	Human, Mouse, Rat
Description	Boster Bio Anti-Ribonuclease T2 RNASET2 Antibody (Catalog # A05281). Tested in ELISA, WB, ICC, IF applications. This antibody reacts with Human, Mouse, Rat.
Application	ELISA, IF, ICC, WB
Clonality	Polyclonal
Formulation	RNASET2 Antibody is supplied in PBS containing 0.02% sodium azide.
Storage Instructions	RNASET2 antibody can be stored at 4°C for three months and -20°C, stable for up to one year. Avoid repeated freeze-thaw cycles. Antibodies should not be exposed to prolonged high temperatures.
Host	Rabbit
Uniprot ID	O00584

### Technical Details

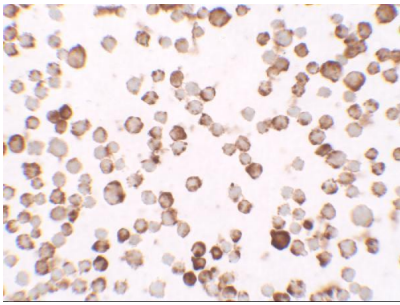
Immunogen	RNASET2 antibody was raised against a 16 amino acid synthetic peptide near the carboxy terminus of human RNASET2. The immunogen is located within the last 50 amino acids of RNASET2.
Predicted Reactive Species	Pig
Isotype	IgG
Form	Liquid
Concentration	1 mg/mL
Purification	RNASET2 Antibody is affinity chromatography purified via peptide column.
Suggested Dilutions	RNASET2 antibody can be used for detection of FOXRED2 by Western blot at 1 ug/mL. Antibody validated: Western Blot in human samples; Immunocytochemistry in human samples and

Immunofluorescence in human samples. All other applications and species not yet tested. Optimal dilutions for each application should be determined by the researcher.

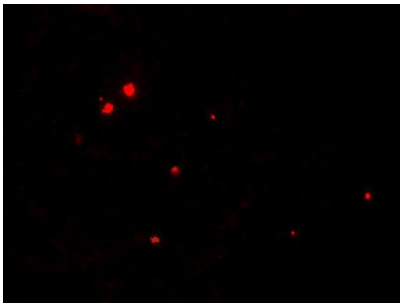
## Anti-Ribonuclease T2 RNASET2 Antibody (A05281) Images



Western blot analysis of RNASET2 in SW480 cell lysate with RNASET2 antibody at 1 ug/mL in (A) the absence and (B) the presence of blocking peptide.



Immunocytochemistry of RNASET2 in SW480 cells with RNASET2 antibody at 2.5 ug/ml.



Immunofluorescence of RNASET2 in SW480 cells with RNASET2 antibody at 5 ug/ml.

### Submit a product review to Biocompare.com

Submit a review of this product to Biocompare.com to receive a \$20 Amazon.com giftcard! Your reviews help your fellow scientists make the right decisions. Thank you for your contribution.



Anti-Ribonuclease T2 RNASET2 Antibody

For Research Use Only. Not for use in diagnostic procedures.