

Anti-CTTNBL1 CTNNBL1 Antibody

Catalog Number: A05286

About CTNNBL1

The Beta-catenin-like protein 1 (CTNNBL1) contains an acidic domain, a putative bipartite nuclear localization signal, a nuclear export signal, a leucine-isoleucine zipper, and phosphorylation motifs, as well as Armadillo/beta-catenin-like repeats. Transient expression of CTNNBL1 resulted in translocation to the nucleus and apoptosis, suggesting it may be involved in the apoptotic pathway. CTNNBL1 interacts with the Prp19 complex of the spliceosome and the Ig class switching enzyme activation-induced deaminase (AID) and had been suggested to play a role in antibody-diversification and class switching, but recent studies have shown CTNNBL1 to be dispensable for Ig class switch recombination. Other studies have identified CTTNBL1 as a novel gene for obesity.

Overview

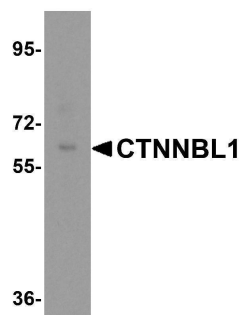
Product Name	Anti-CTTNBL1 CTNNBL1 Antibody
Reactive Species	Human, Mouse, Rat
Description	Boster Bio Anti-CTTNBL1 CTNNBL1 Antibody (Catalog # A05286). Tested in ELISA, WB, IHC-P, IF applications. This antibody reacts with Human, Mouse, Rat.
Application	ELISA, IF, IHC-P, WB
Clonality	Polyclonal
Formulation	CTTNBL1 Antibody is supplied in PBS containing 0.02% sodium azide.
Storage Instructions	CTTNBL1 antibody can be stored at 4°C for three months and -20°C, stable for up to one year. Avoid repeated freeze-thaw cycles. Antibodies should not be exposed to prolonged high temperatures.
Host	Rabbit
Uniprot ID	Q8WYA6

Technical Details

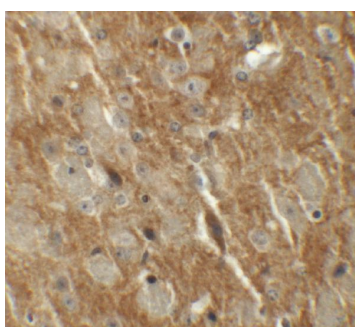
Immunogen	CTTNBL1 antibody was raised against a 20 amino acid synthetic peptide near the carboxy terminus of human CTTNBL1. The immunogen is located within the last 50 amino acids of CTTNBL1.
Predicted Reactive Species	Bovine
Cross Reactivity	CTNNBL1 antibody is predicted to not cross-react with other catenin family members. At least four isoforms of CTNNBL1 are known to exist; this antibody will detect all but isoform b.
Isotype	IgG
Form	Liquid
Concentration	1 mg/mL

Purification	CTTNBL1 Antibody is affinity chromatography purified via peptide column.
Suggested Dilutions	CTTNBL1 antibody can be used for detection of CTTNBL1 by Western blot at 1 and 2 ug/mL. Antibody can also be used for immunohistochemistry starting at 5 ug/mL. For immunofluorescence start at 20 ug/mL. Antibody validated: Western Blot in human samples; Immunohistochemistry in mouse samples and Immunofluorescence in mouse samples. All other applications and species not yet tested. Optimal dilutions for each application should be determined by the researcher.

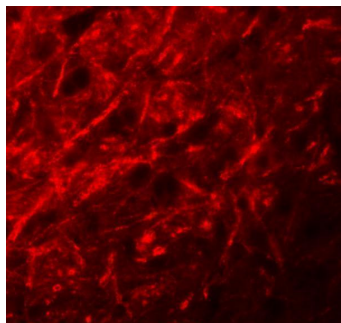
Anti-CTTNBL1 CTNNBL1 Antibody (A05286) Images



Western blot analysis of CTNNBL1 in human brain tissue lysate with CTNNBL1 antibody at 0.5 ug/mL.



Immunohistochemistry of CTNNBL1 in mouse brain tissue with CTNNBL1 antibody at 5 ug/mL.



Immunofluorescence of CTNNBL1 in mouse brain tissue with CTNNBL1 antibody at 20 ug/mL.

Submit a product review to Biocompare.com

Submit a review of this product to Biocompare.com to receive a \$20 Amazon.com giftcard! Your reviews help your fellow scientists make the right decisions. Thank you for your contribution.



Anti-CTTNBL1 CTNNBL1 Antibody

For Research Use Only. Not for use in diagnostic procedures.