

## Anti-SLAMF6 Antibody Picoband®

Catalog Number: A05310-2

### About SLAMF6

SLAM family member 6 is a protein that in humans is encoded by the SLAMF6 gene. The protein encoded by this gene is a type I transmembrane protein, belonging to the CD2 subfamily of the immunoglobulin superfamily. This encoded protein is expressed on Natural killer (NK), T, and B lymphocytes. It undergoes tyrosine phosphorylation and associates with the Src homology 2 domain-containing protein (SH2D1A) as well as with SH2 domain-containing phosphatases (SHPs). It functions as a coreceptor in the process of NK cell activation. It can also mediate inhibitory signals in NK cells from X-linked lymphoproliferative patients. Alternative splicing results in multiple transcript variants encoding distinct isoforms.

### Overview

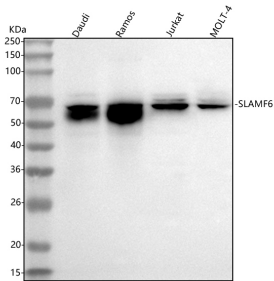
Product Name	Anti-SLAMF6 Antibody Picoband®
Reactive Species	Human
Description	Boster Bio Anti-SLAMF6 Antibody Picoband® catalog # A05310-2. Tested in ELISA, WB, Flow Cytometry applications. This antibody reacts with Human. The brand Picoband indicates this is a premium antibody that guarantees superior quality, high affinity, and strong signals with minimal background in Western blot applications. Only our best-performing antibodies are designated as Picoband, ensuring unmatched performance.
Application	ELISA, Flow Cytometry, WB
Clonality	Polyclonal
Formulation	Each vial contains 4 mg Trehalose, 0.9 mg NaCl, 0.2 mg Na <sub>2</sub> HPO <sub>4</sub> .
Storage Instructions	At -20°C for one year from date of receipt. After reconstitution, at 4°C for one month. It can also be aliquotted and stored frozen at -20°C for six months. Avoid repeated freezing and thawing.
Host	Rabbit
Uniprot ID	Q96DU3

### Technical Details

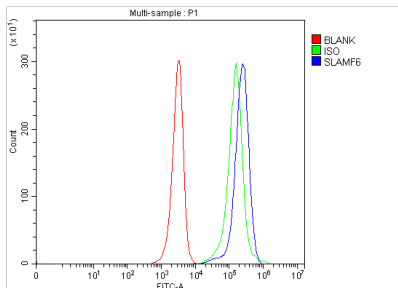
Immunogen	E.coli-derived human SLAMF6 recombinant protein (Position: Q22-V332). Human SLAMF6 shares 43.1% amino acid (aa) sequence identity with mouse SLAMF6.
Recommended Detection Systems	Boster recommends Enhanced Chemiluminescent Kit with anti-Rabbit IgG (EK1002) for Western blot.
Cross Reactivity	No cross reactivity with other proteins.
Isotype	IgG
Form	Lyophilized

Concentration	Adding 0.2 ml of distilled water will yield a concentration of 500 µg/ml.
Purification	Immunogen affinity purified.
Suggested Dilutions	Western blot, 0.1-0.25 µg/ml, Human Flow Cytometry (Fixed), 1-3 µg/1x10 <sup>6</sup> cells, Human ELISA, 0.1-0.5 µg/ml, -

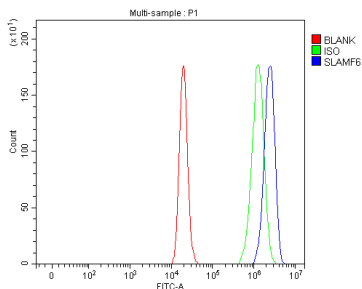
## Anti-SLAMF6 Antibody Picoband® (A05310-2) Images



Western blot analysis of SLAMF6 using anti-SLAMF6 antibody (A05310-2). Electrophoresis was performed on a 5-20% SDS-PAGE gel at 70V (Stacking gel) / 90V (Resolving gel) for 2-3 hours. The sample well of each lane was loaded with 30 ug of sample under reducing conditions. Lane 1: human Daudi whole cell lysates, Lane 2: human Ramos whole cell lysates, Lane 3: human Jurkat whole cell lysates, Lane 4: human MOLT-4 whole cell lysates. After electrophoresis, proteins were transferred to a nitrocellulose membrane at 150 mA for 50-90 minutes. Blocked the membrane with 5% non-fat milk/TBS for 1.5 hour at RT. The membrane was incubated with rabbit anti-SLAMF6 antigen affinity purified polyclonal antibody (Catalog # A05310-2) at 0.25 ug/mL overnight at 4°C, then washed with TBS-0.1%Tween 3 times with 5 minutes each and probed with a goat anti-rabbit IgG-HRP secondary antibody at a dilution of 1:5000 for 1.5 hour at RT. The signal is developed using an Enhanced Chemiluminescent detection (ECL) kit (Catalog # EK1002) with Tanon 5200 system. A specific band was detected for SLAMF6 at approximately 60 kDa. The expected band size for SLAMF6 is at 37 kDa.



Flow Cytometry analysis of JK cells using anti-SLAMF6 antibody (A05310-2). Overlay histogram showing JK cells stained with A05310-2 (Blue line). The cells were fixed with 4% paraformaldehyde and blocked with 10% normal goat serum. And then incubated with rabbit anti-SLAMF6 Antibody (A05310-2, 1 ug/1x10<sup>6</sup> cells) for 30 min at 20°C. DyLight@488 conjugated goat anti-rabbit IgG (BA1127, 5-10 ug/1x10<sup>6</sup> cells) was used as secondary antibody for 30 minutes at 20°C. Isotype control antibody (Green line) was rabbit IgG (1 ug/1x10<sup>6</sup>) used under the same conditions. Unlabelled sample (Red line) was also used as a control.



Flow Cytometry analysis of THP-1 cells using anti-SLAMF6 antibody (A05310-2). Overlay histogram showing THP-1 cells stained with A05310-2 (Blue line). The cells were fixed with 4% paraformaldehyde and blocked with 10% normal goat serum. And then incubated with rabbit anti-SLAMF6 Antibody (A05310-2, 1 ug/1x10<sup>6</sup> cells) for 30 min at 20°C. DyLight@488 conjugated goat anti-rabbit IgG (BA1127, 5-10 ug/1x10<sup>6</sup> cells) was used as secondary antibody for 30 minutes at 20°C. Isotype control antibody (Green line) was rabbit IgG (1 ug/1x10<sup>6</sup>) used under the same conditions. Unlabelled sample (Red line) was also used as a control.

Submit a product review to [Biocompare.com](https://www.biocompare.com)

Submit a review of this product to [Biocompare.com](https://www.biocompare.com) to receive a \$20 Amazon.com giftcard! Your reviews help your fellow scientists make the right decisions. Thank you for your contribution.



Anti-SLAMF6 Antibody

For Research Use Only. Not for use in diagnostic procedures.