

Anti-MPP5/PALS1 Antibody Picoband®

Catalog Number: A05311-2

About PALS1

This gene encodes a member of the p55-like subfamily of the membrane-associated guanylate kinase (MAGUK) gene superfamily. The encoded protein participates in the polarization of differentiating cells, has been shown to regulate myelinating Schwann cells (PMID: 20237282), and is one of the components of the Crumbs complex in the retina. Mice which express lower levels of the orthologous protein have retinal degeneration and impaired vision (PMID: 22114289). Multiple transcript variants encoding different isoforms have been found for this gene.

Overview

Product Name	Anti-MPP5/PALS1 Antibody Picoband®
Reactive Species	Human, Mouse, Rat
Description	Boster Bio Anti-MPP5/PALS1 Antibody Picoband® catalog # A05311-2. Tested in WB, IHC, IP, Flow Cytometry, ELISA applications. This antibody reacts with Human, Mouse, Rat. The brand Picoband indicates this is a premium antibody that guarantees superior quality, high affinity, and strong signals with minimal background in Western blot applications. Only our best-performing antibodies are designated as Picoband, ensuring unmatched performance.
Application	ELISA, Flow Cytometry, IP, IHC, WB
Clonality	Polyclonal
Formulation	Each vial contains 4 mg Trehalose, 0.9 mg NaCl, 0.2 mg Na ₂ HPO ₄ .
Storage Instructions	At -20°C for one year from date of receipt. After reconstitution, at 4°C for one month. It can also be aliquotted and stored frozen at -20°C for six months. Avoid repeated freezing and thawing.
Host	Rabbit
Uniprot ID	Q8N3R9

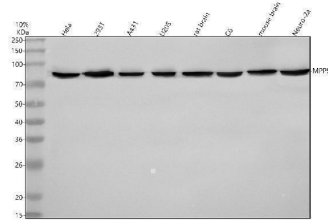
Technical Details

Immunogen	E.coli-derived human MPP5/PALS1 recombinant protein (Position: R86-D386). Human MPP5/PALS1 shares 95.7% and 96.7% amino acid (aa) sequence identity with mouse and rat MPP5/PALS1, respectively.
Recommended Detection Systems	Boster recommends Enhanced Chemiluminescent Kit with anti-Rabbit IgG (EK1002) for Western blot, and HRP Conjugated anti-Rabbit IgG Super Vision Assay Kit (SV0002-1) for IHC(P).
Form	Lyophilized
Concentration	Adding 0.2 ml of distilled water will yield a concentration of 500 ug/ml.
Purification	Immunogen affinity purified.

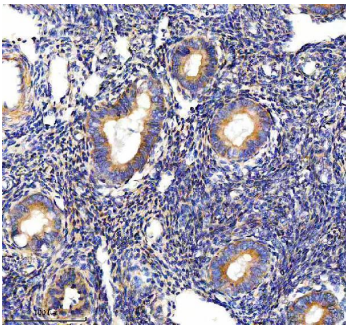
Suggested Dilutions

Western blot, 0.25-0.5 ug/ml, Human, Mouse, Rat
Immunohistochemistry(Paraffin-embedded Section), 2-5 ug/ml, Human
Immunoprecipitation, 2-4 ug/ml, Human
Flow Cytometry (Fixed), 1-3 ug/1x10⁶ cells, Human
ELISA, 0.1-0.5 ug/ml

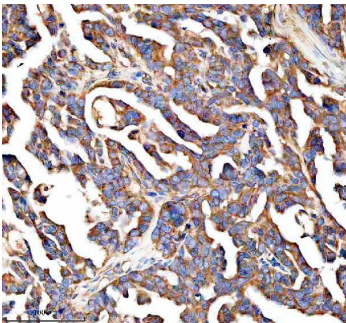
Anti-MPP5/PALS1 Antibody Picoband® (A05311-2) Images



Western blot analysis of MPP5/PALS1 using anti-MPP5/PALS1 antibody (A05311-2). Electrophoresis was performed on a 10% SDS-PAGE gel at 80V (Stacking gel) / 120V (Resolving gel) for 2 hours. The sample well of each lane was loaded with 30 ug of sample under reducing conditions. Lane 1: human HeLa whole cell lysates, Lane 2: human 293T whole cell lysates, Lane 3: human A431 whole cell lysates, Lane 4: human U20S whole cell lysates, Lane 5: rat brain tissue lysates, Lane 6: rat C6 whole cell lysates, Lane 7: mouse brain tissue lysates, Lane 8: mouse Neuro-2a whole cell lysates. After electrophoresis, proteins were transferred to a nitrocellulose membrane at 150 mA for 50-90 minutes. Blocked the membrane with 5% non-fat milk/TBS for 1.5 hour at RT. The membrane was incubated with rabbit anti-MPP5/PALS1 antigen affinity purified polyclonal antibody (A05311-2) at 0.5 ug/mL overnight at 4°C, then washed with TBS-0.1% Tween 3 times with 5 minutes each and probed with a goat anti-rabbit IgG-HRP secondary antibody at a dilution of 1:5000 for 1.5 hour at RT. The signal is developed using an ECL Plus Western Blotting Substrate (Catalog # AR1196-200) with Tanon 5200 system. A specific band was detected for MPP5/PALS1 at approximately 80 kDa. The expected band size for MPP5/PALS1 is at 77 kDa.

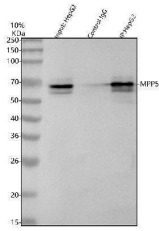


IHC analysis of MPP5/PALS1 using anti-MPP5/PALS1 antibody (A05311-2). MPP5/PALS1 was detected in a paraffin-embedded section of human endometrial cancer tissue. Heat mediated antigen retrieval was performed in EDTA buffer (pH 8.0, epitope retrieval solution). The tissue section was blocked with 10% goat serum. The tissue section was then incubated with 2 ug/ml rabbit anti-MPP5/PALS1 Antibody (A05311-2) overnight at 4°C. Peroxidase Conjugated Goat Anti-rabbit IgG was used as secondary antibody and incubated for 30 minutes at 37°C. The tissue section was developed using HRP Conjugated Rabbit IgG Super Vision Assay Kit (Catalog # SV0002) with DAB as the chromogen.

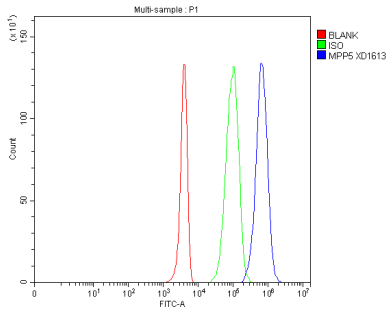


IHC analysis of MPP5/PALS1 using anti-MPP5/PALS1 antibody (A05311-2). MPP5/PALS1 was detected in a paraffin-embedded section of human ovarian cancer tissue. Heat mediated antigen retrieval was performed in EDTA buffer (pH 8.0, epitope retrieval solution). The tissue section was blocked with 10% goat serum. The tissue section was then incubated with 2 ug/ml rabbit anti-MPP5/PALS1 Antibody (A05311-2) overnight at 4°C. Peroxidase Conjugated Goat Anti-rabbit IgG was used as secondary antibody and incubated for 30 minutes at 37°C. The tissue section was developed using HRP Conjugated Rabbit IgG Super Vision Assay Kit (Catalog # SV0002) with DAB as the chromogen.

Immunoprecipitating MPP5/PALS1 in HepG2 whole cell lysate. Western blot analysis of MPP5/PALS1 using anti-



MPP5/PALS1 antibody (A05311-2). Lane 1: HepG2 whole cell lysates (30ug), Lane 2: Rabbit control IgG instead of anti-MPP5/PALS1 antibody in HepG2 whole cell lysate, Lane 3: anti-MPP5/PALS1 antibody (2ug) + HepG2 whole cell lysate (500ug). After electrophoresis, proteins were transferred to a membrane. Then the membrane was incubated with rabbit anti-MPP5/PALS1 antigen affinity purified polyclonal antibody (A05311-2) at a dilution of 0.5 ug/mL and probed with a mouse anti-rabbit IgG-HRP secondary antibody (Light Chain). The signal is developed using ECL Plus Western Blotting Substrate (Catalog # AR1197). A specific band was detected for MPP5/PALS1 at approximately 80 kDa. The expected band size for MPP5/PALS1 is at 77 kDa.



Flow Cytometry analysis of 293T cells using anti-MPP5/PALS1 antibody (A05311-2). Overlay histogram showing 293T cells stained with A05311-2 (Blue line). The cells were fixed with 4% paraformaldehyde and blocked with 10% normal goat serum. And then incubated with rabbit anti-MPP5/PALS1 Antibody (A05311-2, 1 ug/1x10⁶ cells) for 30 min at 20°C. DyLight[®]488 conjugated goat anti-rabbit IgG (BA1127, 5-10 ug/1x10⁶ cells) was used as secondary antibody for 30 minutes at 20°C. Isotype control antibody (Green line) was rabbit IgG (1 ug/1x10⁶) used under the same conditions. Unlabelled sample without incubation with primary antibody and secondary antibody (Red line) was used as a blank control.

Submit a product review to Biocompare.com

Submit a review of this product to Biocompare.com to receive a \$20 Amazon.com giftcard! Your reviews help your fellow scientists make the right decisions. Thank you for your contribution.



Anti-MPP5/PALS1 Antibody

For Research Use Only. Not for use in diagnostic procedures.