

## Anti-Melanoma-associated antigen C2 MAGEC2 Antibody

Catalog Number: A05335-1

### Overview

Product Name	Anti-Melanoma-associated antigen C2 MAGEC2 Antibody
Reactive Species	Human, Mouse, Rat
Description	Boster Bio Anti-Melanoma-associated antigen C2 MAGEC2 Antibody catalog # A05335-1. Tested in WB applications. This antibody reacts with Human,Mouse,Rat.
Application	WB
Clonality	Polyclonal
Formulation	Rabbit IgG, 1mg/ml in PBS with 0.02% sodium azide, 50% glycerol, pH7.2
Storage Instructions	Store at -20°C for one year. For short term storage and frequent use, store at 4°C for up to one month. Avoid repeated freeze-thaw cycles.
Host	Rabbit
Uniprot ID	Q9UBF1

### Technical Details

Immunogen	Synthetic peptide, corresponding to amino acids 237-282 of Human MAGEC2.
Isotype	IgG
Form	Liquid
Concentration	1 mg/ml
Purification	The antibody was affinity-purified from rabbit antiserum by affinity-chromatography using epitope-specific immunogen and the purity is > 95% (by SDS-PAGE).
Suggested Dilutions	WB: 1:500-1:1000

## Anti-Melanoma-associated antigen C2 MAGEC2 Antibody (A05335-1) Images

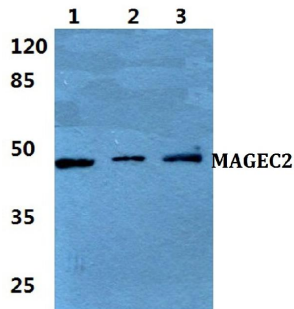


Figure 1. Western blotting validation for Anti-Melanoma-associated antigen C2 MAGEC2 Antibody A05335-1

Western blot (WB) analysis of MAGEC2 polyclonal antibody at 1:500 dilution

Lane1:HEK293T cell lysate

Lane2:NIH-3T3 cell lysate

Lane3:PC12 cell lysate

Electrophoresis was performed on a SDS-PAGE gel. To determine SDS-PAGE gel concentration

### Submit a product review to Biocompare.com

Submit a review of this product to Biocompare.com to receive a \$20 Amazon.com giftcard! Your reviews help your fellow scientists make the right decisions. Thank you for your contribution.



Anti-Melanoma-associated antigen C2 MAGEC2 Antibody