

## Anti-Aipl1 Antibody

Catalog Number: A05356

### About AIPL1

Aipl1 was initially identified as a protein implicated in Leber congenital amaurosis (LCA), an autosomal recessive disorder thought to be caused by the abnormal development of photoreceptors. Aipl1 is a tetratricopeptide repeat protein that is highly homologous to ARA9, a protein involved in the HSP90-mediated nuclear translocation and transactivation of the aryl hydrocarbon receptor. Aipl1 has also been found to function as part of a chaperone heterocomplex, interacting with Hsp90 and Hsp70. Aipl1 also associates with the cell cycle regulator NUB1. It is thought that Aipl1 cooperates with Hsp70 but not Hsp90 to suppress the formation of NUB1 inclusions, and these interactions are necessary in the normal photoreceptor maturation, as mutations that lead to LCA also compromise the interactions with the Hsp chaperones. At least three isoforms of Aipl1 are known to exist.

### Overview

|                      |  |
|----------------------|--|
| Product Name         | Anti-Aipl1 Antibody  |
| Reactive Species     | Human, Mouse   |
| Description          | Boster Bio Anti-Aipl1 Antibody (Catalog # A05356). Tested in ELISA, WB, IHC-P, IF applications. This antibody reacts with Human, Mouse.  |
| Application          | ELISA, IF, IHC-P, WB   |
| Clonality            | Polyclonal   |
| Formulation          | Aipl1 Antibody is supplied in PBS containing 0.02% sodium azide.   |
| Storage Instructions | Aipl1 antibody can be stored at 4°C for three months and -20°C, stable for up to one year. Avoid repeated freeze-thaw cycles. Antibodies should not be exposed to prolonged high temperatures. |
| Host                 | Rabbit   |
| Uniprot ID           | Q9NZN9   |

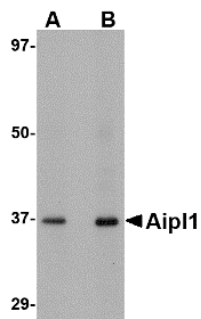
### Technical Details

|                            |   |
|----------------------------|---|
| Immunogen                  | Aipl1 antibody was raised against a 17 amino acid synthetic peptide near the carboxy terminus of the human Aipl1. The immunogen is located within amino acids 290 - 340 of Aipl1. |
| Predicted Reactive Species | Rat   |
| Isotype                    | IgG   |
| Form                       | Liquid  |
| Concentration              | 1 mg/mL   |
| Purification               | Aipl1 Antibody is affinity chromatography purified via peptide column.  |

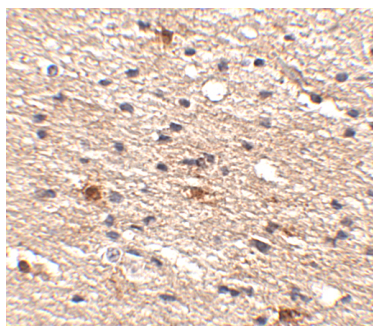
Suggested Dilutions

Aipl1 antibody can be used for detection of Aipl1 by Western blot at 1 - 2 ug/mL. Antibody can also be used for immunohistochemistry starting at 2.5 ug/mL. For immunofluorescence start at 20 ug/mL. Antibody validated: Western Blot in human samples; Immunohistochemistry in human samples and Immunofluorescence in human samples. All other applications and species not yet tested. Optimal dilutions for each application should be determined by the researcher.

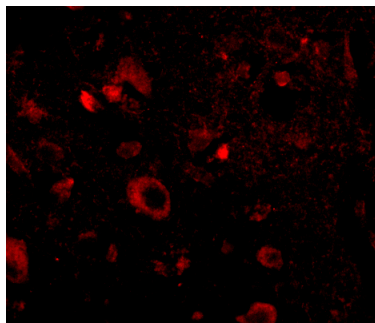
## Anti-Aipl1 Antibody (A05356) Images



Western blot analysis of Aipl1 in human brain tissue lysate with Aipl1 antibody at (A) 1 and (B) 2 ug/mL.



Immunohistochemistry of Aipl1 in human brain tissue with Aipl1 antibody at 2.5 ug/mL.



Immunofluorescence of aipl1 in human brain tissue with aipl1 antibody at 20 ug/mL.

### Submit a product review to [Biocompare.com](https://www.biocompare.com)

Submit a review of this product to [Biocompare.com](https://www.biocompare.com) to receive a \$20 Amazon.com giftcard! Your reviews help your fellow scientists make the right decisions. Thank you for your contribution.



### Anti-Aipl1 Antibody

For Research Use Only. Not for use in diagnostic procedures.