

## Anti-GBL MLST8 Antibody

Catalog Number: A05357-1

### About MLST8

GbetaL (G protein beta protein subunit-like) is a member of a signaling pathway that regulates mammalian cell growth in response to the presence of nutrients and growth factors. It binds to the kinase domain of TOR (Target of rapamycin, also known as mTOR), an evolutionarily conserved serine/threonine kinase that regulates cell growth and cell cycle through its ability to integrate signals from nutrient levels and growth factors. Rapamycin inhibits TOR resulting in reduced cell growth and reduced rates of cell cycle and cell proliferation. TOR is normally associated with GbetaL and an additional regulatory protein RAPTOR, allowing TOR to control protein biosynthesis. The binding of GbetaL to TOR stimulates TOR's kinase activity towards downstream proteins such as RPS6K (ribosomal protein S6 kinase) and the translation factor 4E-BP1 which leads to increased protein translation and cell growth.

### Overview

Product Name	Anti-GBL MLST8 Antibody
Reactive Species	Human, Mouse, Rat
Description	Boster Bio Anti-GBL MLST8 Antibody (Catalog # A05357-1). Tested in ELISA, WB, IHC-P, IF applications. This antibody reacts with Human, Mouse, Rat.
Application	ELISA, IF, IHC-P, WB
Clonality	Polyclonal
Formulation	GBL Antibody is supplied in PBS containing 0.02% sodium azide.
Storage Instructions	GBL antibody can be stored at 4°C for three months and -20°C, stable for up to one year. Avoid repeated freeze-thaw cycles. Antibodies should not be exposed to prolonged high temperatures.
Host	Rabbit
Uniprot ID	Q9BVC4

### Technical Details

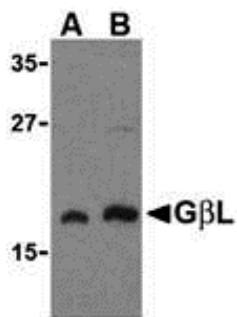
Immunogen	GbL antibody was raised against a 14 amino acid synthetic peptide from near the carboxy terminus of human GbL. The immunogen is located within the first 50 amino acids of GBL.
Predicted Reactive Species	Bovine
Isotype	IgG
Form	Liquid
Concentration	1 mg/mL
Purification	GBL Antibody is affinity chromatography purified via peptide column.

Suggested Dilutions

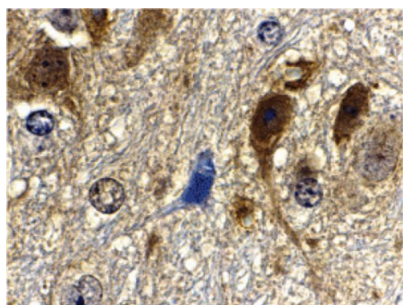
GbL antibody can be used for the detection of GbL by Western blot at 1 and 2 ug/mL. Antibody can also be used for immunohistochemistry starting at 10 ug/mL. For immunofluorescence start at 10 ug/mL.

Antibody validated: Western Blot in human samples; Immunohistochemistry in mouse samples and Immunofluorescence in mouse samples. All other applications and species not yet tested. Optimal dilutions for each application should be determined by the researcher.

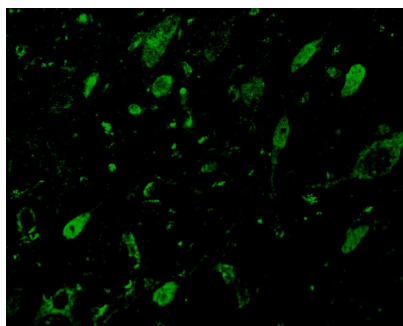
## Anti-GBL MLST8 Antibody (A05357-1) Images



Western blot analysis of GbL in human brain cell lysate with GbL antibody at (A) 1 and (B) 2 ug/mL.



Immunohistochemistry of GbL in mouse brain tissue with GbL antibody at 10 ug/mL.



Immunofluorescence of GbL in Mouse Brain cells with GbL antibody at 10 ug/mL.

### Submit a product review to [Biocompare.com](https://www.biocompare.com)

Submit a review of this product to [Biocompare.com](https://www.biocompare.com) to receive a \$20 Amazon.com giftcard! Your reviews help your fellow scientists make the right decisions. Thank you for your contribution.



Anti-GBL MLST8 Antibody

For Research Use Only. Not for use in diagnostic procedures.