

## Anti-ABCF1 Antibody

Catalog Number: A05358-1

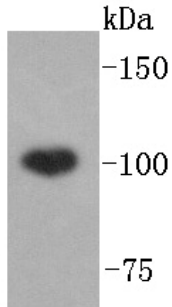
### Overview

Product Name	Anti-ABCF1 Antibody
Reactive Species	Human, Rat
Description	Boster Bio Anti-ABCF1 Antibody catalog # A05358-1. Tested in WB,ICC/IF,IHC applications. This antibody reacts with Human,Rat.
Application	IF, IHC, ICC, WB
Clonality	Polyclonal
Formulation	Rabbit IgG, 1mg/ml in PBS with 0.02% sodium azide, 50% glycerol, pH7.2
Storage Instructions	Store at -20°C for one year. For short term storage and frequent use, store at 4°C for up to one month. Avoid repeated freeze-thaw cycles.
Host	Rabbit
Uniprot ID	Q8NE71

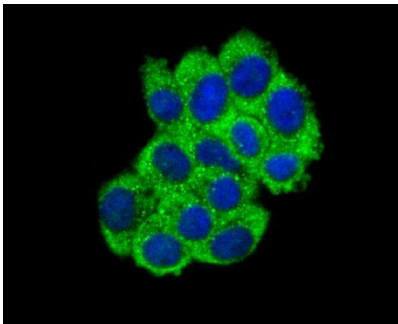
### Technical Details

Immunogen	recombinant protein
Isotype	IgG
Form	Liquid
Concentration	1 mg/ml
Purification	ProA affinity purified
Suggested Dilutions	WB: 1:1,000-1:2,000 ICC: 1:100-1:500 IHC: 1:50-1:200

## Anti-ABCF1 Antibody (A05358-1) Images



Western blot analysis of ABCF1 on HeLa lysates using anti-ABCF1 antibody at 1/1,000 dilution.



ICC staining ABCF1 in HepG2 cells (green). The nuclear counter stain is DAPI (blue). Cells were fixed in paraformaldehyde, permeabilised with 0.25% Triton X100/PBS.

### Submit a product review to [Biocompare.com](https://www.biocompare.com)

Submit a review of this product to [Biocompare.com](https://www.biocompare.com) to receive a \$20 Amazon.com giftcard! Your reviews help your fellow scientists make the right decisions. Thank you for your contribution.



Anti-ABCF1 Antibody

For Research Use Only. Not for use in diagnostic procedures.