

Anti-EN1 (Engrailed 1) Antibody (N-term)

Catalog Number: A05395

About EN1

Homeobox-containing genes are thought to have a role in controlling development. In *Drosophila*, the 'engrailed' (*en*) gene plays an important role during development in segmentation, where it is required for the formation of posterior compartments. Different mutations in the mouse homologs, *En1* and *En2*, produced different developmental defects that frequently are lethal. The human engrailed homologs 1 and 2 encode homeodomain-containing proteins and have been implicated in the control of pattern formation during development of the central nervous system.

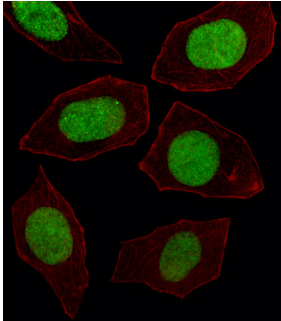
Overview

Product Name	Anti-EN1 (Engrailed 1) Antibody (N-term)
Reactive Species	Human, Mouse
Description	Boster Bio Anti-EN1 (Engrailed 1) Antibody (N-term) (Catalog # A05395). Tested in IF, IHC-P, WB application(s). This antibody reacts with Human, Mouse.
Application	IF, IHC-P, WB
Clonality	Polyclonal
Formulation	Purified polyclonal antibody supplied in PBS with 0.09% (W/V) sodium azide.
Storage Instructions	Maintain refrigerated at 2-8°C for up to 2 weeks. For long-term storage, store at -20°C in small aliquots to prevent freeze-thaw cycles.
Host	Rabbit
Uniprot ID	Q05925

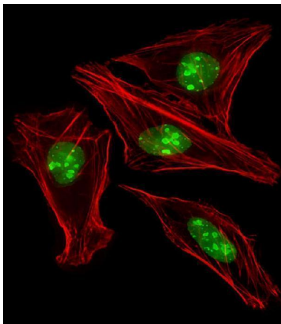
Technical Details

Immunogen	This EN1 (Engrailed 1) antibody is generated from rabbits immunized with a KLH conjugated synthetic peptide between 1-30 amino acids from the N-terminal region of human EN1 (Engrailed 1).
Predicted Reactive Species	Bovine
Isotype	Rabbit IgG
Purification	This antibody is purified through a protein A column, followed by peptide affinity purification.
Suggested Dilutions	IF: 1:25 WB: 1:2000 IHC-P: 1:25

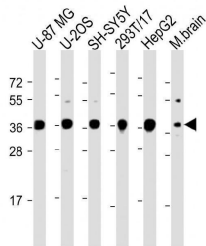
Anti-EN1 (Engrailed 1) Antibody (N-term) (A05395) Images



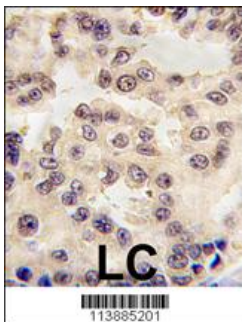
Fluorescent image of U251 cell stained with EN1 Antibody (N-term). U251 cells were fixed with 4% PFA (20 min), permeabilized with Triton X-100 (0.1%, 10 min), then incubated with EN1 primary antibody (1:25, 1 h at 37°C). For secondary antibody, Alexa Fluor® 488 conjugated donkey anti-rabbit antibody (green) was used (1:400, 50 min at 37°C). Cytoplasmic actin was counterstained with Alexa Fluor® 555 (red) conjugated Phalloidin at 37°C. EN1 immunoreactivity is localized to Nucleus significantly.



Immunofluorescent analysis of 4% paraformaldehyde-fixed, 0.1% Triton X-100 permeabilized U-2 OS (Human Sarcoma cell line) cells labeling HME1 with A05395 at 1/25 dilution, followed by Alexa Fluor 488-conjugated goat anti-rabbit IgG secondary antibody at 1/400 dilution (green). Immunofluorescence image showing nucleus and nucleoli staining on U-2 OS cell line. Cytoplasmic actin is detected with Alexa Fluor® 555 conjugated with Phalloidin at 1/100 dilution (red).

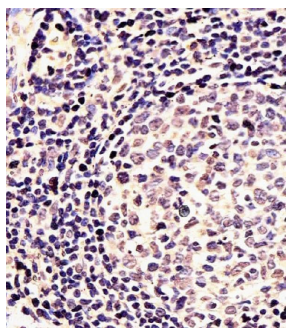


All lanes : Anti-EN1 (Engrailed 1) Antibody (N-term) at 1:2000 dilution
Lane 1: U-87 MG whole cell lysate
Lane 2: U-2OS whole cell lysate
Lane 3: SH-SY5Y whole cell lysate
Lane 4: 293T/17 whole cell lysate
Lane 5: HepG2 whole cell lysate
Lane 6: Mouse brain lysate
Lysates/proteins at 20 µg per lane. Secondary Goat Anti-Rabbit IgG, (H+L), Peroxidase conjugated at 1/10000 dilution. Predicted band size : 40 kDa
Blocking/Dilution buffer: 5% NFD/MTBST.



Formalin-fixed and paraffin-embedded human lung carcinoma tissue reacted with EN1 antibody (N-term) (Cat. #A05395), which was peroxidase-conjugated to the secondary antibody, followed by DAB staining. This data demonstrates the use of this antibody for immunohistochemistry; clinical relevance has not been evaluated.

A05395 staining EN1 in Human tonsil tissue sections by Immunohistochemistry (IHC-P -paraformaldehyde-fixed, paraffin-embedded sections). Tissue was fixed with formaldehyde and blocked with 3% BSA for 0.5 hour at room temperature; antigen retrieval was by heat mediation with a citrate buffer (pH6). Samples were incubated with primary antibody (1/25) for 1 hours at 37°C. A undiluted



biotinylated goat polyvalent antibody was used as the secondary antibody.

Submit a product review to [Biocompare.com](https://www.biocompare.com)

Submit a review of this product to [Biocompare.com](https://www.biocompare.com) to receive a \$20 Amazon.com giftcard! Your reviews help your fellow scientists make the right decisions. Thank you for your contribution.



Anti-EN1 (Engrailed 1) Antibody (N-term)

For Research Use Only. Not for use in diagnostic procedures.