

Anti-HSPA6 Antibody (C-term)

Catalog Number: A05402-2

About HSPA6

In cooperation with other chaperones, Hsp70s stabilize preexistent proteins against aggregation and mediate the folding of newly translated polypeptides in the cytosol as well as within organelles. These chaperones participate in all these processes through their ability to recognize nonnative conformations of other proteins. They bind extended peptide segments with a net hydrophobic character exposed by polypeptides during translation and membrane translocation, or following stress-induced damage.

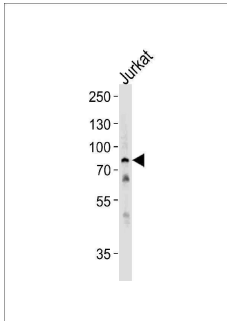
Overview

Product Name	Anti-HSPA6 Antibody (C-term)
Reactive Species	Human
Description	Boster Bio Anti-HSPA6 Antibody (C-term) (Catalog # A05402-2). Tested in WB, Flow Cytometry, IHC-P application(s). This antibody reacts with Human.
Application	Flow Cytometry, IHC-P, WB
Clonality	Polyclonal
Formulation	Purified polyclonal antibody supplied in PBS with 0.09% (W/V) sodium azide.
Storage Instructions	Maintain refrigerated at 2-8°C for up to 2 weeks. For long-term storage, store at -20°C in small aliquots to prevent freeze-thaw cycles.
Host	Rabbit
Uniprot ID	P17066

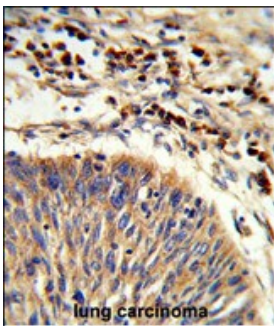
Technical Details

Immunogen	This HSPA6 antibody is generated from rabbits immunized with a KLH conjugated synthetic peptide between 544-571 amino acids from the C-terminal region of human HSPA6.
Predicted Reactive Species	Mouse
Isotype	Rabbit IgG
Purification	This antibody is purified through a protein A column, followed by peptide affinity purification.
Suggested Dilutions	WB: 1:1000 IHC-P: 1:50-1:100 FC: 1:10-1:50

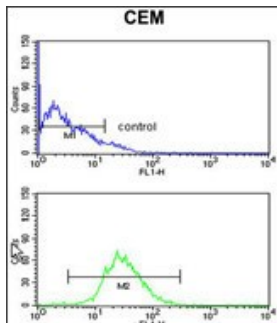
Anti-HSPA6 Antibody (C-term) (A05402-2) Images



Western blot analysis of lysate from Jurkat cell line, using HSPA6 Antibody (C-term). A05402-2 was diluted at 1:1000 at each lane. A goat anti-rabbit IgG H&L (HRP) at 1:5000 dilution was used as the secondary antibody. Lysate at 35ug per lane.



Formalin-fixed and paraffin-embedded human lung carcinoma reacted with HSPA6 Antibody (C-term), which was peroxidase-conjugated to the secondary antibody, followed by DAB staining. This data demonstrates the use of this antibody for immunohistochemistry; clinical relevance has not been evaluated.



HSPA6 Antibody (C-term) flow cytometry analysis of CEM cells (bottom histogram) compared to a negative control cell (top histogram). FITC-conjugated goat-anti-rabbit secondary antibodies were used for the analysis.

Submit a product review to [Biocompare.com](https://www.biocompare.com)

Submit a review of this product to [Biocompare.com](https://www.biocompare.com) to receive a \$20 Amazon.com giftcard! Your reviews help your fellow scientists make the right decisions. Thank you for your contribution.



Anti-HSPA6 Antibody (C-term)

For Research Use Only. Not for use in diagnostic procedures.