

Anti-KINDLIN3 FERMT3 Antibody

Catalog Number: A05406

About FERMT3

The three KINDLINS are a novel family of focal adhesion proteins, localizing to integrin adhesion sites. The KINDLIN proteins are composed of a centrally located FERM domain interrupted by a pleckstrin homology (PH) domain. KINDLIN1 and KINDLIN2 have been shown to play an essential role in integrin-mediated adhesion and spreading. In contrast to the widely expressed KINDLIN1 and KINDLIN2, KINDLIN3 is restricted to hematopoietic cells and is particularly abundant in megakaryocytes and platelets. Several reports describe a transcriptional misregulation of KINDLINS in various types of cancer. A recent study demonstrates that KINDLIN3 is essential for platelet integrin activation and subsequent integrin outside-in signaling, suggesting it may serve as a potential target for the design of therapeutics aimed at specifically disrupting integrin activation in platelets and leukocytes.

Overview

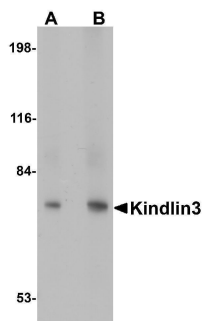
Product Name	Anti-KINDLIN3 FERMT3 Antibody
Reactive Species	Human, Mouse, Rat
Description	Boster Bio Anti-KINDLIN3 FERMT3 Antibody (Catalog # A05406). Tested in ELISA, WB applications. This antibody reacts with Human, Mouse, Rat.
Application	ELISA, WB
Clonality	Polyclonal
Formulation	KINDLIN3 Antibody is supplied in PBS containing 0.02% sodium azide.
Storage Instructions	KINDLIN3 antibody can be stored at 4°C for three months and -20°C, stable for up to one year. Avoid repeated freeze-thaw cycles. Antibodies should not be exposed to prolonged high temperatures.
Host	Rabbit
Uniprot ID	Q86UX7

Technical Details

Immunogen	KINDLIN3 antibody was raised against a 19 amino acid synthetic peptide near the carboxy terminus of the human KINDLIN3. The immunogen is located within the last 50 amino acids of KINDLIN3.
Predicted Reactive Species	Bovine
Isotype	IgG
Form	Liquid
Concentration	1 mg/mL

Purification	KINDLIN3 Antibody is affinity chromatography purified via peptide column.
Suggested Dilutions	KINDLIN3 antibody can be used for detection of KINDLIN3 by Western blot at 1 and 2 ug/mL. Antibody validated: Western Blot in rat samples. All other applications and species not yet tested. Optimal dilutions for each application should be determined by the researcher.

Anti-KINDLIN3 FERMT3 Antibody (A05406) Images



Western blot analysis of KINDLIN3 in rat spleen lysate with KINDLIN3 antibody at (A) 1 and (B) 2 ug/mL.

Submit a product review to Biocompare.com

Submit a review of this product to Biocompare.com to receive a \$20 Amazon.com giftcard! Your reviews help your fellow scientists make the right decisions. Thank you for your contribution.



Anti-KINDLIN3 FERMT3 Antibody

For Research Use Only. Not for use in diagnostic procedures.