

## Anti-Integrin beta ITGB7 Antibody

Catalog Number: A05433

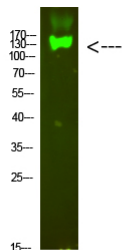
### Overview

Product Name	Anti-Integrin beta ITGB7 Antibody
Reactive Species	Human, Mouse
Description	Boster Bio Anti-Integrin beta ITGB7 Antibody catalog # A05433. Tested in ELISA, WB applications. This antibody reacts with Human, Mouse.
Application	ELISA, IHC, WB
Clonality	Polyclonal
Formulation	Liquid in PBS containing 50% glycerol, 0.5% stabilizing protein and 0.02% sodium azide. *This antibody is supplied in a stabilized formulation. Compatibility with conjugation reactions depends on the chemistry of the conjugation method used. For conjugation methods that are not compatible with the stabilizing components present in this formulation, a carrier-free antibody format is required.
Storage Instructions	Store at -20°C for one year. For short term storage and frequent use, store at 4°C for up to one month. Avoid repeated freeze-thaw cycles.
Host	Rabbit
Uniprot ID	P26010

### Technical Details

Immunogen	Synthesized peptide derived from human Integrin beta7. at AA range: 671-720
Isotype	IgG
Form	Liquid
Concentration	1 mg/ml
Purification	The antibody was affinity-purified from rabbit antiserum by affinity-chromatography using epitope-specific immunogen.
Suggested Dilutions	WB 1:500-2000 IHC 1:50-300 ELISA 1:2000-20000

## Anti-Integrin beta ITGB7 Antibody (A05433) Images



Western blotting validation for Anti-Integrin beta ITGB7 Antibody A05433 Western Blot analysis of mouse-heart cells using primary antibody diluted at 1:1000 (4°C overnight). Secondary antibody:Goat Anti-rabbit IgG IRDye 800 (diluted at 1:5000

### Submit a product review to Biocompare.com

Submit a review of this product to Biocompare.com to receive a \$20 Amazon.com giftcard! Your reviews help your fellow scientists make the right decisions. Thank you for your contribution.



Anti-Integrin beta ITGB7 Antibody

For Research Use Only. Not for use in diagnostic procedures.