

Anti-EDG-4 (L310) LPAR2 Antibody

Catalog Number: A05435-1

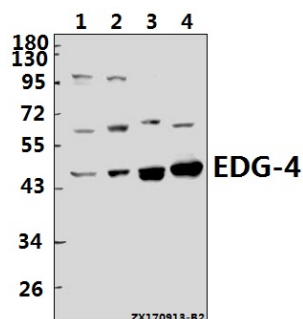
Overview

Product Name	Anti-EDG-4 (L310) LPAR2 Antibody
Reactive Species	Human, Mouse, Rat
Description	Boster Bio Anti-EDG-4 (L310) LPAR2 Antibody catalog # A05435-1. Tested in WB,IHC,IF applications. This antibody reacts with Human,Mouse,Rat.
Application	IF, IHC, WB
Clonality	Polyclonal
Formulation	Rabbit IgG, 1mg/ml in PBS with 0.02% sodium azide, 50% glycerol, pH7.2
Storage Instructions	Store at -20°C for one year. For short term storage and frequent use, store at 4°C for up to one month. Avoid repeated freeze-thaw cycles.
Host	Rabbit
Uniprot ID	Q9HBW0

Technical Details

Immunogen	Synthetic peptide, corresponding to amino acids 278-325 of Human EDG-4.
Isotype	IgG
Form	Liquid
Concentration	1 mg/ml
Purification	The antibody was affinity-purified from rabbit antiserum by affinity-chromatography using epitope-specific immunogen and the purity is > 95% (by SDS-PAGE).
Suggested Dilutions	WB: 1:500-1:1000 IHC: 1:50-1:200 IF: 1:50-1:200

Anti-EDG-4 (L310) LPAR2 Antibody (A05435-1) Images



Western blot (WB) analysis of EDG-4 (L310) pAb at 1:1000 dilution Lane1:Panc1 whole cell lysate(40ug) Lane2:K562 whole cell lysate(40ug) Lane3:The Testis tissue lysate of Mouse(40ug) Lane4:The Testis tissue lysate of Rat(40ug)

Submit a product review to Biocompare.com

Submit a review of this product to Biocompare.com to receive a \$20 Amazon.com giftcard! Your reviews help your fellow scientists make the right decisions. Thank you for your contribution.



Anti-EDG-4 (L310) LPAR2 Antibody

For Research Use Only. Not for use in diagnostic procedures.