

Anti-SLC44A2 Antibody Picoband®

Catalog Number: A05467-1

About Slc44a2

Choline transporter-like protein 2 is a protein that in humans is encoded by the SLC44A2 gene. CTL2 is a multi-pass membrane protein expressed in cells of the inner ear. CTL2 is a possible candidate for autoimmune hearing loss in humans. Present in supporting cells of the inner ear (at protein level). Only isoform 3 is expressed in inner ear vestibular tissue.

Overview

Product Name	Anti-SLC44A2 Antibody Picoband®
Reactive Species	Mouse, Rat
Description	Boster Bio Anti-SLC44A2 Antibody Picoband® catalog # A05467-1. Tested in ELISA, Flow Cytometry, IHC, WB applications. This antibody reacts with Mouse, Rat. The brand Picoband indicates this is a premium antibody that guarantees superior quality, high affinity, and strong signals with minimal background in Western blot applications. Only our best-performing antibodies are designated as Picoband, ensuring unmatched performance.
Application	ELISA, Flow Cytometry, IHC, WB
Clonality	Polyclonal
Formulation	Each vial contains 4mg Trehalose, 0.9mg NaCl, 0.2mg Na ₂ HPO ₄ .
Storage Instructions	Store at -20°C for one year from date of receipt. After reconstitution, at 4°C for one month. It can also be aliquotted and stored frozen at -20°C for six months. Avoid repeated freeze-thaw cycles.
Host	Rabbit
Uniprot ID	Q8BY89

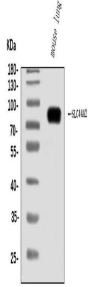
Technical Details

Immunogen	E.coli-derived mouse SLC44A2 recombinant protein (Position: M1-S706).
Recommended Detection Systems	Boster recommends Enhanced Chemiluminescent Kit with anti-Rabbit IgG (EK1002) for Western blot, and HRP Conjugated anti-Rabbit IgG Super Vision Assay Kit (SV0002-1) for IHC(P).
Cross Reactivity	No cross-reactivity with other proteins.
Isotype	Rabbit IgG
Form	Lyophilized
Concentration	Adding 0.2 ml of distilled water will yield a concentration of 500 ug/ml.
Purification	Immunogen affinity purified.

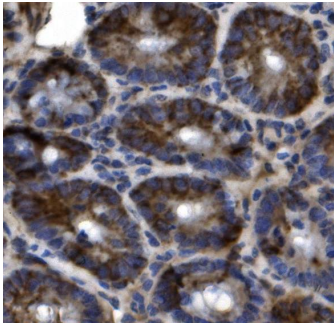
Suggested Dilutions

Western blot, 0.25-0.5ug/ml, Mouse, Rat
Immunohistochemistry (Paraffin-embedded Section), 2-5ug/ml, Mouse
Flow Cytometry (Fixed), 1-3ug/1x10⁶ cells, Mouse
ELISA, 0.1-0.5ug/ml, -

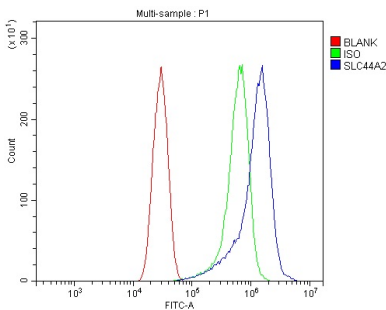
Anti-SLC44A2 Antibody Picoband® (A05467-1) Images



Western blot analysis of SLC44A2 using anti-SLC44A2 antibody (A05467-1). Electrophoresis was performed on a 5-20% SDS-PAGE gel at 70V (Stacking gel) / 90V (Resolving gel) for 2-3 hours. The sample well of each lane was loaded with 30ug of sample under reducing conditions. Lane 1: mouse lung tissue lysates. After Electrophoresis, proteins were transferred to a Nitrocellulose membrane at 150mA for 50-90 minutes. Blocked the membrane with 5% Non-fat Milk/TBS for 1.5 hour at RT. The membrane was incubated with rabbit anti-SLC44A2 antigen affinity purified polyclonal antibody (Catalog # A05467-1) at 0.5 ug/mL overnight at 4°C, then washed with TBS-0.1%Tween 3 times with 5 minutes each and probed with a goat anti-rabbit IgG-HRP secondary antibody at a dilution of 1:5000 for 1.5 hour at RT. The signal is developed using an Enhanced Chemiluminescent detection (ECL) kit (Catalog # EK1002) with Tanon 5200 system. A specific band was detected for SLC44A2 at approximately 80KD. The expected band size for SLC44A2 is at 80KD.



IHC analysis of SLC44A2 using anti-SLC44A2 antibody (A05467-1). SLC44A2 was detected in paraffin-embedded section of mouse intestine tissue. Heat mediated antigen retrieval was performed in EDTA buffer (pH8.0, epitope retrieval solution). The tissue section was blocked with 10% goat serum. The tissue section was then incubated with 2ug/ml rabbit anti-SLC44A2 Antibody (A05467-1) overnight at 4°C. Biotinylated goat anti-rabbit IgG was used as secondary antibody and incubated for 30 minutes at 37°C. The tissue section was developed using Streptavidin-Biotin-Complex (SABC) (Catalog # SA1022) with DAB as the chromogen.



Flow Cytometry analysis of HEPA1-6 cells using anti-SLC44A2 antibody (A05467-1). Overlay histogram showing HEPA1-6 cells stained with A05467-1 (Blue line). To facilitate intracellular staining, cells were fixed with 4% paraformaldehyde and permeabilized with permeabilization buffer. The cells were blocked with 10% normal goat serum. And then incubated with rabbit anti-SLC44A2 Antibody (A05467-1, 1ug/1x10⁶ cells) for 30 min at 20°C. DyLight® 488 conjugated goat anti-rabbit IgG (BA1127, 5-10ug/1x10⁶ cells) was used as secondary antibody for 30 minutes at 20°C. Isotype control antibody (Green line) was rabbit IgG (1ug/1x10⁶) used under the same conditions. Unlabelled sample without incubation with primary antibody and secondary antibody (Red line) was used as a blank control.

Submit a review of this product to Biocompare.com to receive a \$20 Amazon.com giftcard! Your reviews help your fellow scientists make the right decisions. Thank you for your contribution.



Anti-SLC44A2 Antibody

For Research Use Only. Not for use in diagnostic procedures.