

Anti-Cathelicidin CAMP Antibody

Catalog Number: A05475

About CAMP

One component of host defense at mucosal surfaces is epithelial-derived antimicrobial peptides. Cathelicidins are one family of antimicrobial peptides characterized by conserved pro-peptide sequences that have been identified in epithelial tissues and some myeloid cells of humans and animals. LL-37/hCAP-18 is the only Cathelicidin found in humans and is expressed in inflammatory and epithelial cells. The presence of these molecules is essential for defense against invasive bacterial infection in skin. Besides their direct antimicrobial function, Cathelicidins have multiple roles in mediating innate and adaptive immunity, such as endotoxin neutralizing, angiogenesis, wound healing and promoting neutrophil chemotaxis and mast cell recruitment. Finally, Cathelicidin antimicrobial peptides qualify as prototypes of innovative drugs that may be used to treat infection and/or modulate the immune response.

Overview

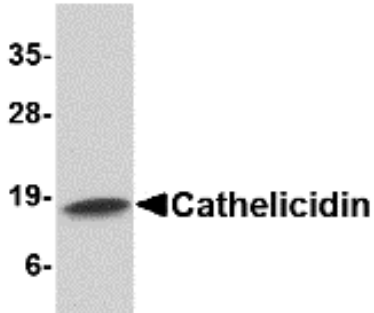
Product Name	Anti-Cathelicidin CAMP Antibody
Reactive Species	Human
Description	Boster Bio Anti-Cathelicidin CAMP Antibody (Catalog # A05475). Tested in ELISA, WB, IHC-P, IF applications. This antibody reacts with Human.
Application	ELISA, IF, IHC-P, WB
Clonality	Polyclonal
Formulation	Cathelicidin Antibody is supplied in PBS containing 0.02% sodium azide.
Storage Instructions	Antibody can be stored at 4°C up to one year. Antibodies should not be exposed to prolonged high temperatures.
Host	Rabbit
Uniprot ID	P49913

Technical Details

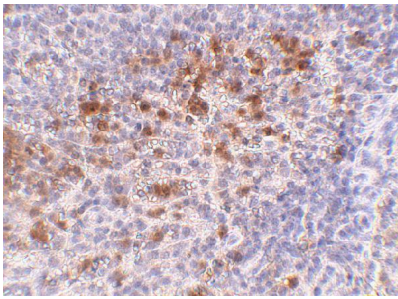
Immunogen	Cathelicidin antibody was raised against a 17 amino acid synthetic peptide near the center of the human Cathelicidin. The immunogen is located within amino acids 50 - 100 of Cathelicidin.
Predicted Reactive Species	Bovine
Cross Reactivity	TRIP12 antibody is human, mouse and rat reactive. At least four isoforms are known to exist.
Isotype	IgG
Form	Liquid
Concentration	1 mg/mL

Purification	Cathelicidin Antibody is affinity chromatography purified via peptide column.
Suggested Dilutions	<p>Cathelicidin antibody can be used for detection of Cathelicidin by Western blot at 1 ug/mL. Antibody can also be used for immunohistochemistry starting at 5 ug/mL. For immunofluorescence start at 20 ug/mL.</p> <p>Antibody validated: Western Blot in human samples; Immunohistochemistry in human samples and Immunofluorescence in human samples. All other applications and species not yet tested. Optimal dilutions for each application should be determined by the researcher.</p>

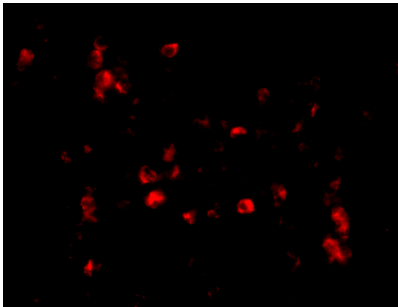
Anti-Cathelicidin CAMP Antibody (A05475) Images



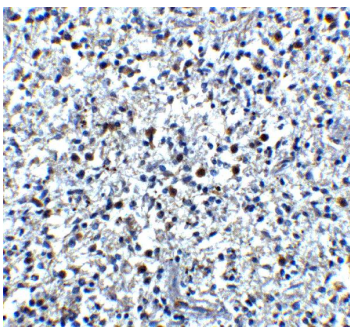
Western blot analysis of Cathelicidin in Human spleen tissue lysate with Cathelicidin antibody at 1 ug/mL.



Immunohistochemistry of Cathelicidin in human spleen tissue with Cathelicidin antibody at 5 ug/mL.



Immunofluorescence of Cathelicidin in Human Spleen cells with Cathelicidin antibody at 20 ug/mL.



Immunohistochemistry of Cathelicidin in human spleen tissue with Cathelicidin antibody at 5 ug/mL.

Submit a product review to [Biocompare.com](https://www.biocompare.com)

Submit a review of this product to [Biocompare.com](https://www.biocompare.com) to receive a \$20 Amazon.com giftcard! Your reviews help your fellow scientists make the right decisions. Thank you for your contribution.

