

Anti-Ras-related protein Rab-38 RAB38 Antibody

Catalog Number: A05500

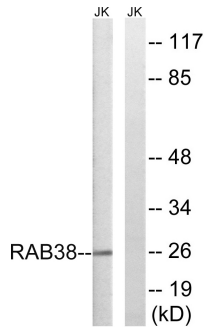
Overview

Product Name	Anti-Ras-related protein Rab-38 RAB38 Antibody
Reactive Species	Human, Mouse, Rat
Description	Boster Bio Anti-Ras-related protein Rab-38 RAB38 Antibody catalog # A05500. Tested in WB applications. This antibody reacts with Human, Mouse, Rat.
Application	WB
Clonality	Polyclonal
Formulation	Rabbit IgG in phosphate buffered saline (without Mg ²⁺ and Ca ²⁺), pH 7.4, 150mM NaCl, 0.02% sodium azide and 50% glycerol.
Storage Instructions	Store at -20°C for one year. For short term storage and frequent use, store at 4°C for up to one month. Avoid repeated freeze-thaw cycles.
Host	Rabbit
Uniprot ID	P57729

Technical Details

Immunogen	A peptide derived from human RAB38. Immunogen sequence location: 80 - 129
Form	Liquid
Concentration	0.5-1mg/ml, actual concentration vary by lot. Use suggested dilution ratio to decide dilution procedure.
Purification	The antibody was purified from rabbit antiserum by affinity-chromatography using immunogen.
Suggested Dilutions	<p>Dilute the sample so that the expected range of concentrations fall within the detection range of this kit.</p> <p>If the expected range of concentration is unknown, a pilot test should be conducted to decide the optimal dilution ratio for your samples.</p> <p>Some PubMed article(s) citing the expression level of this target are as follows: Boster Bio's internal QC testing used User need to optimize the dilution ratio for this antibody</p> <p>For protocols, please visit https://www.bosterbio.com/protocol-and-troubleshooting/</p>

Anti-Ras-related protein Rab-38 RAB38 Antibody (A05500) Images



Western blot analysis of lysates from Jurkat cells, using RAB38 Antibody. The lane on the right is blocked with the synthesized peptide.

Submit a product review to Biocompare.com

Submit a review of this product to Biocompare.com to receive a \$20 Amazon.com giftcard! Your reviews help your fellow scientists make the right decisions. Thank you for your contribution.



Anti-Ras-related protein Rab-38 RAB38 Antibody