

Anti-MCT4 SLC16A3 Antibody

Catalog Number: A05510

Introduction

The clone MYG13 recognizes CD22 cell surface antigen, a 130-140kDa protein. The expression of CD22 is primarily restricted to the normal and neoplastic B cells but does not express on other hematopoietic cells. The initiation of expression of CD22 starts in the cytoplasm of pro-B and pre-B cells. Although CD22 is not expressed by plasma cells, it is abundantly expressed by the follicular mantle and marginal zone B-cells. Being a member of the immunoglobulin superfamily, CD22 serves as an adhesion receptor for sialic acid-bearing ligands expressed on erythrocytes and leukocytes. The role of CD22 in the activation of B-cells is primarily associated with tyrosine kinases mediated signal transduction pathways.

This antibody is routinely tested by flow cytometric analysis. Flow cytometry and other applications were tested during antibody development by CapricoBio or are reported in the literature.

Application Information

Each lot of this antibody has been pre-titrated and tested by flow cytometric analysis of human PBMCs such that 5ul of this product is sufficient for staining of 1 million cells in a 100ul staining volume or 100ul of whole blood. It is recommended that antibody reactivity be empirically titrated for optimal performance in the application of interest.

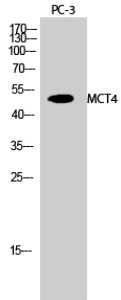
Overview

Product Name	Anti-MCT4 SLC16A3 Antibody
Reactive Species	Human, Mouse, Rat
Description	Boster Bio Anti-MCT4 SLC16A3 Antibody catalog # A05510. Tested in WB, ELISA applications. This antibody reacts with Human, Mouse, Rat.
Conjugate	APC
Application	ELISA, WB
Clonality	Polyclonal
Formulation	Liquid in PBS containing 50% glycerol, 0.5% stabilizing protein and 0.02% sodium azide. *This antibody is supplied in a stabilized formulation. Compatibility with conjugation reactions depends on the chemistry of the conjugation method used. For conjugation methods that are not compatible with the stabilizing components present in this formulation, a carrier-free antibody format is required.
Storage Instructions	Store at -20°C for one year. For short term storage and frequent use, store at 4°C for up to one month. Avoid repeated freeze-thaw cycles.
Host	Rat
Uniprot ID	O15427

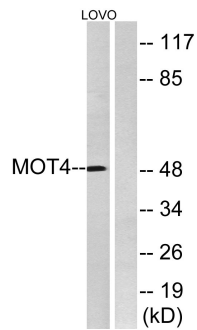
Technical Details

Immunogen	The antiserum was produced against synthesized peptide derived from human MOT4. AA range:233-282
Isotype	IgG
Form	Liquid
Concentration	1 mg/ml
Purification	The antibody was affinity-purified from rabbit antiserum by affinity-chromatography using epitope-specific immunogen.
Suggested Dilutions	WB 1:500-1:2000 ELISA 1:40000

Anti-MCT4 SLC16A3 Antibody (A05510) Images



Western Blot analysis of PC-3 cells using MCT4 Polyclonal Antibody diluted at 1:500



Western blot analysis of lysates from LOVO cells, using MOT4 Antibody. The lane on the right is blocked with the synthesized peptide.

Submit a product review to [Biocompare.com](https://www.biocompare.com)

Submit a review of this product to [Biocompare.com](https://www.biocompare.com) to receive a \$20 Amazon.com giftcard! Your reviews help your fellow scientists make the right decisions. Thank you for your contribution.



Anti-MCT4 SLC16A3 Antibody

For Research Use Only. Not for use in diagnostic procedures.