

Anti-Beta TrCP2 FBXW11 Antibody

Catalog Number: A05523

About FBXW11

This gene encodes a member of the F-box protein family which is characterized by an approximately 40 amino acid motif, the F-box. The F-box proteins constitute one of the four subunits of ubiquitin protein ligase complex called SCFs (SKP1-cullin-F-box), which function in phosphorylation-dependent ubiquitination. The F-box proteins are divided into 3 classes: Fbws containing WD-40 domains, Fbls containing leucine-rich repeats, and Fbxs containing either different protein-protein interaction modules or no recognizable motifs. The protein encoded by this gene belongs to the Fbws class and, in addition to an F-box, contains multiple WD40 repeats. This gene contains at least 14 exons, and its alternative splicing generates 3 transcript variants diverging at the presence/absence of two alternate exons.

Overview

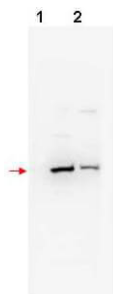
Product Name	Anti-Beta TrCP2 FBXW11 Antibody
Reactive Species	Human, Mouse
Description	Boster Bio Anti-Beta TrCP2 FBXW11 Antibody (Catalog # A05523). Tested in ELISA, WB applications. This antibody reacts with Human, Mouse.
Application	ELISA, IF, WB
Clonality	Polyclonal
Formulation	0.02 M Potassium Phosphate, 0.15 M Sodium Chloride, pH 7.2, 0.01% (w/v) Sodium Azide
Storage Instructions	Store vial at -20°C prior to opening. Aliquot contents and freeze at -20°C or below for extended storage. Avoid cycles of freezing and thawing. Centrifuge product if not completely clear after standing at room temperature. This product is stable for several weeks at 4°C as an undiluted liquid. Dilute only prior to immediate use. Expiration date is one (1) year from date of opening. (Ship on dry ice.)
Host	Rabbit
Uniprot ID	Q9UKB1

Technical Details

Immunogen	This affinity purified antibody was prepared from whole rabbit serum produced by repeated immunizations with a synthetic peptide corresponding to a region near the N-terminal of human β TrCP2 protein.
Predicted Reactive Species	Bovine, Canine, Chicken, Monkey
Cross Reactivity	No cross reactivity with other proteins.
Isotype	IgG

Form	Liquid (sterile filtered)
Concentration	0.8 mg/mL by UV absorbance at 280 nm
Purification	This product was affinity purified from monospecific antiserum by immunoaffinity chromatography. This antibody reacts with human β TrCP2 protein. A BLAST analysis was used to suggest cross-reactivity with β TrCP2 from human, mouse, dog, bovine, chimpanzee, chicken and horse based on a 100% homology with the immunizing sequence. Cross-reactivity with β TrCP2 from other sources has not been determined.
Suggested Dilutions	ELISA: 1:10,000 – 1:100,000 IF Microscopy: User optimized WB: 1:200 to 1:1,000 This affinity purified antibody has been tested for use in ELISA and western blotting.

Anti-Beta TrCP2 FBXW11 Antibody (A05523) Images



Western blot using Boster's affinity purified anti-bTrCP2 antibody shows detection of mouse and human bTrCP2 (arrowhead) in NIH3T3 [lane 1] and 293 [lane 2] whole cell lysates, respectively. The band appears as a 58 kDa protein, although a 62.1 kDa band is predicted. The identity of faint higher molecular weight bands is not known. The primary antibody was used at a 1:200 dilution incubated in 5% BLOTTO overnight at 4°C. Detection occurred using HRP conjugated Goat-anti-Rabbit IgG diluted 1:20,000 in blocking buffer for 1 h at 4 °C.

Submit a product review to [Biocompare.com](https://www.biocompare.com)

Submit a review of this product to [Biocompare.com](https://www.biocompare.com) to receive a \$20 Amazon.com giftcard! Your reviews help your fellow scientists make the right decisions. Thank you for your contribution.



Anti-Beta TrCP2 FBXW11 Antibody

For Research Use Only. Not for use in diagnostic procedures.