

Anti-DNA-binding protein RFX5 RFX5 Antibody

Catalog Number: A05527

About RFX5

DNA-binding protein RFX5 activates transcription from class II MHC promoters and recognizes X-boxes. It mediates cooperative binding between RFX and NF- κ B. RFX binds the X1 box of MHC-II promoters. RFX5 may be associated with Bare Lymphocyte Syndrome Type II, Complement component C and Mhc Class II Deficiency. Anti-RFX5 Antibody is useful for researchers interested in Transcription factors, Tuberculosis, and Allograft rejection.

Overview

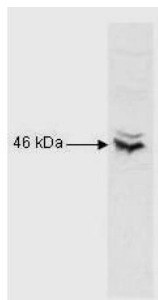
Product Name	Anti-DNA-binding protein RFX5 RFX5 Antibody
Reactive Species	Human
Description	Boster Bio Anti-DNA-binding protein RFX5 RFX5 Antibody (Catalog # A05527). Tested in WB applications. This antibody reacts with Human.
Application	ELISA, WB
Clonality	Polyclonal
Formulation	0.02 M Potassium Phosphate, 0.15 M Sodium Chloride, pH 7.2, 0.01% (w/v) Sodium Azide
Storage Instructions	Store vial at -20°C prior to opening. Aliquot contents and freeze at -20°C or below for extended storage. Avoid cycles of freezing and thawing. Centrifuge product if not completely clear after standing at room temperature. This product is stable for several weeks at 4°C as an undiluted liquid. Dilute only prior to immediate use. Expiration date is one (1) year from date of opening. (Ship on dry ice.)
Host	Rabbit
Uniprot ID	P48382

Technical Details

Immunogen	RFX5 (N-terminal specific) peptide corresponding to a region near the N-terminus of the human protein conjugated to Keyhole Limpet Hemocyanin (KLH).
Predicted Reactive Species	Bovine, Canine, Equine, Guinea Pig, Pig, Rabbit
Cross Reactivity	No cross reactivity with other proteins.
Isotype	Antiserum
Form	Liquid (sterile filtered)
Concentration	90 mg/mL by UV absorbance at 280 nm

Purification	This product was prepared from monospecific antiserum by delipidation and defibrination. Anti-RFX5 (N-terminal specific) may react with unknown minor bands at 55 kDa and 85 kDa.
Suggested Dilutions	ELISA: 1:5,000 - 1:25,000 WB: 1:500 - 1:3,000 Anti-RFX5 has been tested in western blot. This product was also tested in a gel supershift assay and found to be reactive against RFX5 complexes using 0.5 to 1.0 μ l per assay.

Anti-DNA-binding protein RFX5 RFX5 Antibody (A05527) Images



Western Blot of Rabbit Anti-RFX5 antibody. Lane 1: nuclear extract lysates. Load: 10 μ g per lane. Primary antibody: RFX5 antibody at 1:1000 for overnight at 4°C. Secondary antibody: HRP Goat-a-Rabbit IgG secondary antibody at 1:5,000 for 45 min at RT. Block: 5% BLOTTO overnight at 4°C. Predicted/Observed size: 65 kDa, 46 kDa for RFX5. Other band(s): none.

Submit a product review to Biocompare.com

Submit a review of this product to Biocompare.com to receive a \$20 Amazon.com giftcard! Your reviews help your fellow scientists make the right decisions. Thank you for your contribution.



Anti-DNA-binding protein RFX5 RFX5 Antibody

For Research Use Only. Not for use in diagnostic procedures.