

## Anti-Actin-like protein 6A ACTL6A Antibody

Catalog Number: A05553-1

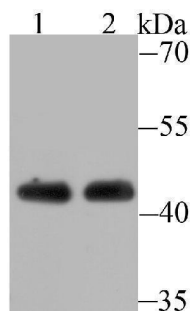
### Overview

Product Name	Anti-Actin-like protein 6A ACTL6A Antibody
Reactive Species	Human, Mouse
Description	Boster Bio Anti-Actin-like protein 6A ACTL6A Antibody catalog # A05553-1. Tested in WB,ICC,IF,IHC,IP applications. This antibody reacts with Human,Mouse.
Application	IP, IF, IHC, ICC, WB
Clonality	Polyclonal
Formulation	Rabbit IgG, 1mg/ml in PBS with 0.02% sodium azide, 50% glycerol, pH7.2
Storage Instructions	Store at -20°C for one year. For short term storage and frequent use, store at 4°C for up to one month. Avoid repeated freeze-thaw cycles.
Host	Rabbit
Uniprot ID	O96019

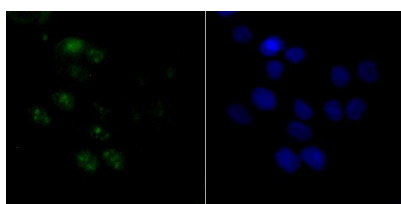
### Technical Details

Immunogen	Recombinant protein
Isotype	IgG
Form	Liquid
Concentration	1 mg/ml
Purification	ProA affinity purified
Suggested Dilutions	WB: 1:500-1:2,000 ICC/IF: 1:50-1:100 IHC: 1:50-1:100 IP: 1:10-1:50

## Anti-Actin-like protein 6A ACTL6A Antibody (A05553-1) Images



Western blot analysis of ACTL6A on Jurkat cell(1) and mouse brain tissue(2) lysate using anti-ACTL6A antibody at 1/500 dilution.



ICC staining ACTL6A in LOVO cells (green). The nuclear counter stain is DAPI (blue). Cells were fixed in paraformaldehyde, permeabilised with 0.25% Triton X100/PBS.

### Submit a product review to [Biocompare.com](https://www.biocompare.com)

Submit a review of this product to [Biocompare.com](https://www.biocompare.com) to receive a \$20 Amazon.com giftcard! Your reviews help your fellow scientists make the right decisions. Thank you for your contribution.



Anti-Actin-like protein 6A ACTL6A Antibody

For Research Use Only. Not for use in diagnostic procedures.