

Anti-Metalloreductase STEAP3 STEAP3 Antibody

Catalog Number: A05568-1

About STEAP3

The six-transmembrane epithelial antigen of prostate 3 (STEAP3) is a member of a family of metalloreductases identified as cell-surface antigens in prostate tissue. Similar to two other members of the STEAP family (STEAP 2 and STEAP4), STEAP3 promotes both iron and copper reduction. STEAP3 is highly expressed in hematopoietic tissues and colocalizes with the transferrin endosome. Overexpression of STEAP3 stimulates iron reduction; mice lacking STEAP3 are deficient in erythroid ferrireductase activity, suggesting that STEAP3 is an endosomal ferrireductase required for transferrin-dependent iron uptake in erythroid cells.

Overview

Product Name	Anti-Metalloreductase STEAP3 STEAP3 Antibody
Reactive Species	Human, Mouse, Rat
Description	Boster Bio Anti-Metalloreductase STEAP3 STEAP3 Antibody (Catalog # A05568-1). Tested in ELISA, WB, IHC-P, IF applications. This antibody reacts with Human, Mouse, Rat.
Application	ELISA, IF, IHC-P, WB
Clonality	Polyclonal
Formulation	STEAP3 Antibody is supplied in PBS containing 0.02% sodium azide.
Storage Instructions	STEAP3 antibody can be stored at 4°C for three months and -20°C, stable for up to one year. Avoid repeated freeze-thaw cycles. Antibodies should not be exposed to prolonged high temperatures.
Host	Rabbit
Uniprot ID	Q658P3

Technical Details

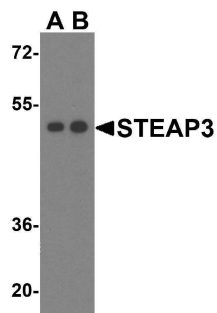
Immunogen	STEAP3 antibody was raised against a 15 amino acid synthetic peptide from near the amino terminus of human STEAP3. The immunogen is located within the first 50 amino acids of STEAP3.
Predicted Reactive Species	Bovine
Cross Reactivity	This STEAP3 antibody does not cross-react with other STEAP proteins.
Isotype	IgG
Form	Liquid
Concentration	1 mg/mL
Purification	STEAP3 Antibody is affinity chromatography purified via peptide column.

Suggested Dilutions

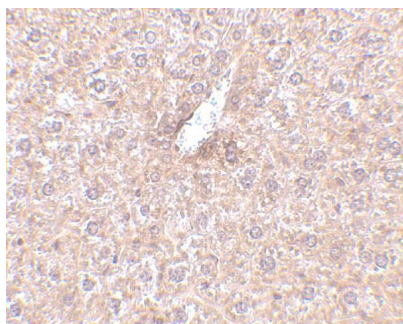
STEAP3 antibody can be used for detection of STEAP3 by Western blot at 1 - 2 ug/mL. Antibody can also be used for immunohistochemistry starting at 2.5 ug/mL. For immunofluorescence start at 20 ug/mL.

Antibody validated: Western Blot in human samples; Immunohistochemistry in mouse samples and Immunofluorescence in mouse samples. All other applications and species not yet tested. Optimal dilutions for each application should be determined by the researcher.

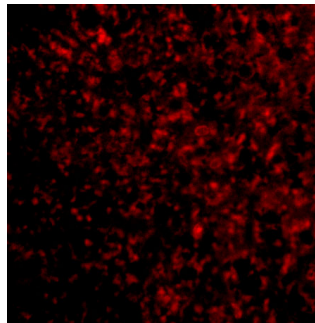
Anti-Metalloreductase STEAP3 STEAP3 Antibody (A05568-1) Images



Western blot analysis of STEAP3 in HeLa cell lysate with STEAP3 antibody at (A) 1 and (B) 2 ug/mL.



Immunohistochemistry of STEAP3 in mouse liver tissue with STEAP3 antibody at 2.5 ug/mL.



Immunofluorescence of STEAP3 in Mouse Liver cells with STEAP3 antibody at 20 ug/mL.

Submit a product review to [Biocompare.com](https://www.biocompare.com)

Submit a review of this product to [Biocompare.com](https://www.biocompare.com) to receive a \$20 Amazon.com giftcard! Your reviews help your fellow scientists make the right decisions. Thank you for your contribution.



Anti-Metalloreductase STEAP3 STEAP3 Antibody

For Research Use Only. Not for use in diagnostic procedures.