

Anti-KID KIF22 Monoclonal Antibody

Catalog Number: A05570

About KIF22

DNA-binding protein RFX5 activates transcription from class II MHC promoters and recognizes X-boxes. It mediates cooperative binding between RFX and NF- κ B. RFX binds the X1 box of MHC-II promoters. RFX5 may be associated with Bare Lymphocyte Syndrome Type II Complement group C and Mhc Class II Deficiency. Anti-RFX5 Antibody is useful for researchers interested in Transcription factors, Tuberculosis, and Allograft rejection.

Overview

Product Name	Anti-KID KIF22 Monoclonal Antibody
Reactive Species	Human
Description	Boster Bio Anti-KID KIF22 Monoclonal Antibody catalog # A05570. Tested in Flow Cytometry, IHC, WB applications. This antibody reacts with Human.
Application	Flow Cytometry, IHC, WB
Clonality	Monoclonal 1E3
Formulation	Ascitic fluid containing 0.03% sodium azide.
Storage Instructions	Store at -20°C for one year. For short term storage and frequent use, store at 4°C for up to one month. Avoid repeated freeze-thaw cycles.
Host	Mouse
Uniprot ID	Q14807

Technical Details

Immunogen	Purified recombinant fragment of human KID expressed in E. Coli.
Predicted Reactive Species	Bovine, Canine, Equine, Guinea Pig, Pig, Sheep, Zebrafish
Cross Reactivity	No cross reactivity with other proteins.
Isotype	IgG
Form	Liquid
Concentration	This antibody's concentration is >0.5mg/ml.
Purification	Ascitic fluid
Suggested Dilutions	Dilute the sample so that the expected range of concentrations fall within the detection range of this kit.

If the expected range of concentration is unknown, a pilot test should be conducted to decide the optimal dilution ratio for your samples.

Some PubMed article(s) citing the expression level of this target are as follows:

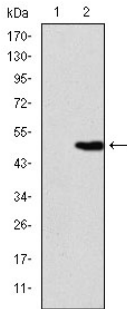
Boster Bio's internal QC testing used:

WB, 1:500-1:2000

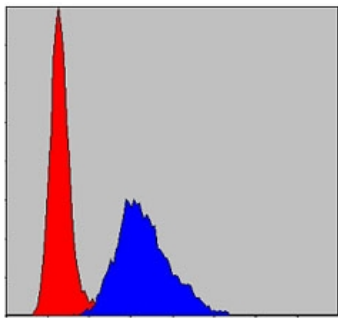
IHC, 1:200-1:1000

FC, 1:200-1:400

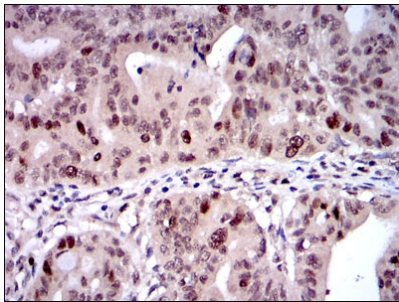
Anti-KID KIF22 Monoclonal Antibody (A05570) Images



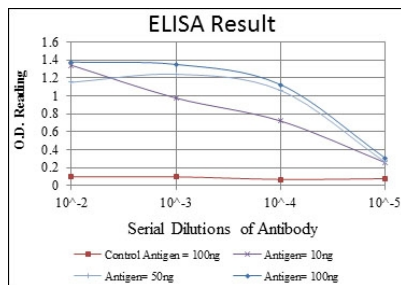
Western Blot (WB) analysis using KID Monoclonal antibody against HEK293 (1) and KID-hlgGfC transfected HEK293 (2) cell lysate.



Flow cytometric (FCM) analysis of NIH/3T3 cells using KID Monoclonal antibody (blue) and negative control (red).



Immunohistochemistry (IHC) analysis of paraffin-embedded rectum cancer tissues with DAB staining using KID Monoclonal antibody.



ELISA analysis of KID antibody.

Submit a product review to Biocompare.com

Submit a review of this product to Biocompare.com to receive a \$20 Amazon.com giftcard! Your reviews help your fellow scientists make the right decisions. Thank you for your contribution.



Anti-KID KIF22 Monoclonal Antibody