

Anti-Phosphoserine phosphatase PSPH Antibody

Catalog Number: A05579

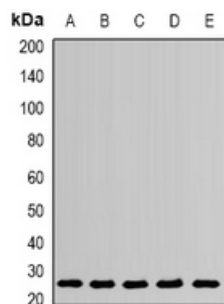
Overview

Product Name	Anti-Phosphoserine phosphatase PSPH Antibody
Reactive Species	Human, Mouse, Rat
Description	Boster Bio Anti-Phosphoserine phosphatase PSPH Antibody catalog # A05579. Tested in WB,IHC applications. This antibody reacts with Human,Mouse,Rat.
Application	IHC, WB
Clonality	Polyclonal
Formulation	Rabbit IgG, 1mg/ml in PBS with 0.02% sodium azide, 50% glycerol, pH7.2
Storage Instructions	Store at -20°C for one year. For short term storage and frequent use, store at 4°C for up to one month. Avoid repeated freeze-thaw cycles.
Host	Rabbit
Uniprot ID	P78330

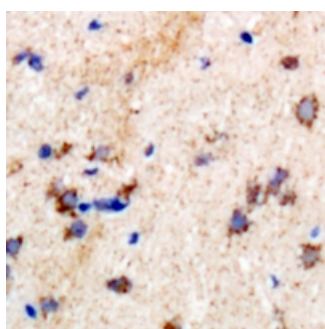
Technical Details

Immunogen	Synthetic peptide, corresponding to Human PSPH.
Isotype	IgG
Form	Liquid
Concentration	1 mg/ml
Purification	The antibody was affinity-purified from rabbit antiserum by affinity-chromatography using epitope-specific immunogen and the purity is > 95% (by SDS-PAGE).
Suggested Dilutions	WB: 1:500-1:1000 IHC: 1:50-1:200

Anti-Phosphoserine phosphatase PSPH Antibody (A05579) Images



Western blot (WB) analysis of PSPH polyclonal antibody at 1:500 dilution LaneA:Jurkat whole cell lysate(40ug) LaneB:A431 whole cell lysate(40ug) LaneC:The Brain tissue lysate of Mouse(40ug) LaneD:The Kidney tissue lysate of Mouse(40ug) LaneE:The Liver tissue lysate of Rat(40ug)



Immunohistochemical analysis of PSPH staining in rat brain formalin fixed paraffin embedded tissue section. The section was pre-treated using heat mediated antigen retrieval with sodium citrate buffer (pH 6.0). The section was then incubated with the antibody at room temperature and detected using an HRP conjugated compact polymer system.

Submit a product review to Biocompare.com

Submit a review of this product to Biocompare.com to receive a \$20 Amazon.com giftcard! Your reviews help your fellow scientists make the right decisions. Thank you for your contribution.



Anti-Phosphoserine phosphatase PSPH Antibody

For Research Use Only. Not for use in diagnostic procedures.