

Anti-QSK SIK3 Antibody

Catalog Number: A05580

About SIK3

DNA-binding protein RFX5 activates transcription from class II MHC promoters and recognizes X-boxes. It mediates cooperative binding between RFX and NF- κ B. RFX binds the X1 box of MHC-II promoters. RFX5 may be associated with Bare Lymphocyte Syndrome Type II Complementation group C and Mhc Class II Deficiency. Anti-RFX5 Antibody is useful for researchers interested in Transcription factors, Tuberculosis, and Allograft rejection.

Overview

| | |
|----------------------|--|
| Product Name | Anti-QSK SIK3 Antibody |
| Reactive Species | Human, Mouse |
| Description | Boster Bio Anti-QSK SIK3 Antibody catalog # A05580. Tested in ELISA, IHC-P, WB applications. This antibody reacts with Human, Mouse. |
| Application | ELISA, IHC-P, WB |
| Clonality | Polyclonal 1E3 |
| Formulation | Liquid in PBS containing 50% glycerol, 0.5% BSA and 0.02% sodium azide. |
| Storage Instructions | Store at -20°C for one year. For short term storage and frequent use, store at 4°C for up to one month. Avoid repeated freeze-thaw cycles. |
| Host | Rabbit |
| Uniprot ID | Q9Y2K2 |

Technical Details

| | |
|----------------------------|--|
| Immunogen | Synthesized peptide derived from the Internal region of human QSK. at AA range: 490-570 |
| Predicted Reactive Species | Bovine, Canine, Guinea Pig, Rabbit |
| Cross Reactivity | No cross reactivity with other proteins. |
| Isotype | IgG |
| Form | Liquid |
| Concentration | 1 mg/ml |
| Purification | The antibody was affinity-purified from rabbit antiserum by affinity-chromatography using an epitope-specific immunogen. |
| Suggested Dilutions | Dilute the sample so that the expected range of concentrations fall within the detection range of this |

kit.

If the expected range of concentration is unknown, a pilot test should be conducted to decide the optimal dilution ratio for your samples.

Some PubMed article(s) citing the expression level of this target are as follows:

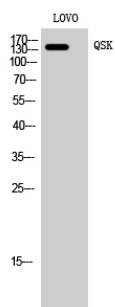
Boster Bio's internal QC testing used:

WB 1:500-1:2000

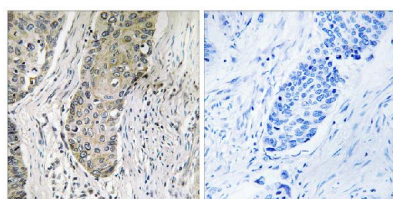
IHC 1:100-1:300

ELISA 1:40000

Anti-QSK SIK3 Antibody (A05580) Images



Western blot analysis of LOVO cells using QSK Polyclonal Antibody.



Immunohistochemistry analysis of paraffin-embedded human lung carcinoma tissue, using QSK Antibody. The picture on the right is blocked with the synthesized peptide.

Submit a product review to Biocompare.com

Submit a review of this product to Biocompare.com to receive a \$20 Amazon.com giftcard! Your reviews help your fellow scientists make the right decisions. Thank you for your contribution.



Anti-QSK SIK3 Antibody