

Anti-IRF2BP2 Antibody

Catalog Number: A05598-1

About IRF2BP2

IRF2BP2, like the related protein IRF2BP1, is a co-repressor that interacts specifically with the C-terminal repression domain of Interferon Regulatory Factor 2 (IRF2). IRF2BP2 is a direct target gene of p53 and is involved in cell survival during the p53 stress response, able to impede the p53-mediated transactivation of p21 and Bax. IRF2BP2 is also a co-factor of VGLL4 and is required to induce the expression of vascular endothelial growth factor A (VEGF-A) in muscle. It is normally found in the nucleus of skeletal muscle and cardiac cells, but can be found in the cytoplasm during skeletal muscle differentiation.

Overview

Product Name	Anti-IRF2BP2 Antibody
Reactive Species	Human, Mouse
Description	Boster Bio Anti-IRF2BP2 Antibody (Catalog # A05598-1). Tested in ELISA, WB, ICC applications. This antibody reacts with Human, Mouse.
Application	ELISA, ICC, WB
Clonality	Polyclonal
Formulation	IRF2BP2 Antibody is supplied in PBS containing 0.02% sodium azide.
Storage Instructions	IRF2BP2 antibody can be stored at 4°C for three months and -20°C, stable for up to one year. Avoid repeated freeze-thaw cycles. Antibodies should not be exposed to prolonged high temperatures.
Host	Rabbit
Uniprot ID	Q7Z5L9

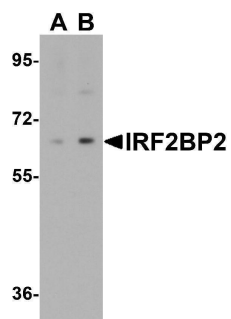
Technical Details

Immunogen	IRF2BP2 antibody was raised against an 18 amino acid synthetic peptide near the carboxy terminus of human IRF2BP2. The immunogen is located within amino acids 440 - 490 of IRF2BP2.
Predicted Reactive Species	Mouse
Cross Reactivity	At least two isoforms of IRF2BP2 are known to exist; this antibody will detect both. This antibody is predicted to not cross-react with any FOXD4 protein family members.
Isotype	IgG
Form	Liquid
Concentration	1 mg/mL
Purification	IRF2BP2 Antibody is affinity chromatography purified via peptide column.

Suggested Dilutions

IRF2BP2 antibody can be used for detection of IRF2BP2 by Western blot at 1 ug/mL. Antibody can also be used for immunocytochemistry starting at 2.5 ug/mL.
Antibody validated: Western Blot in human samples and Immunocytochemistry in mouse samples. All other applications and species not yet tested. Optimal dilutions for each application should be determined by the researcher.

Anti-IRF2BP2 Antibody (A05598-1) Images



Western blot analysis of IRF2BP2 in HeLa cell lysate with IRF2BP2 antibody at 1 ug/mL in (A) the absence and (B) the presence of blocking peptide



Immunocytochemistry of IRF2BP2 in A20 cells with IRF2BP2 antibody at 2.5 ug/mL.

Submit a product review to Biocompare.com

Submit a review of this product to Biocompare.com to receive a \$20 Amazon.com giftcard! Your reviews help your fellow scientists make the right decisions. Thank you for your contribution.



Anti-IRF2BP2 Antibody

For Research Use Only. Not for use in diagnostic procedures.