

Anti-NUP160 Antibody

Catalog Number: A05629-1

About NUP160

The nuclear pore complex (NPC) is a protein assembly localized at the nuclear rim and mediates macromolecular transport between the nucleus and the cytoplasm. The mammalian nucleoporin (NUP)-160 is part of the hetero-oligomeric complex that also contains NUP107, NUP133, NUP96, and mammalian homolog of yeast sec13p. While the majority of the NUP107-160 nuclear pore sub-complex localizes to the nuclear pore, a small fraction is observed at kinetochores and pro-metaphase spindle poles in mitotic cells in association with proteins such as Mad1, Mad2, Bub3 and Cdc20. Immunodepletion of the NUP107-160 complex resulted in defective spindle assembly indicating that it has multiple functions. NUP160 has recently been identified as an HIV dependency factor (HDF), suggesting that NUP160 may be an important drug target in HIV treatment. Multiple isoforms of NUP160 are known to exist.

Overview

Product Name	Anti-NUP160 Antibody
Reactive Species	Human, Mouse, Rat
Description	Boster Bio Anti-NUP160 Antibody (Catalog # A05629-1). Tested in ELISA, WB, IHC-P, IF applications. This antibody reacts with Human, Mouse, Rat.
Application	ELISA, IF, IHC-P, WB
Clonality	Polyclonal
Formulation	NUP160 Antibody is supplied in PBS containing 0.02% sodium azide.
Storage Instructions	NUP160 antibody can be stored at 4°C for three months and -20°C, stable for up to one year. Avoid repeated freeze-thaw cycles. Antibodies should not be exposed to prolonged high temperatures.
Host	Rabbit
Uniprot ID	Q12769

Technical Details

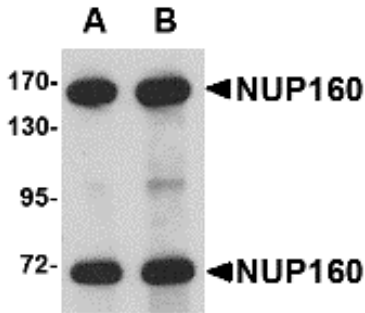
Immunogen	NUP160 antibody was raised against a 14 amino acid synthetic peptide from near the carboxy terminus of human NUP160. The immunogen is located within the last 50 amino acids of NUP160.
Predicted Reactive Species	Mouse
Isotype	IgG
Form	Liquid
Concentration	1 mg/mL
Purification	NUP160 Antibody is affinity chromatography purified via peptide column.

Suggested Dilutions

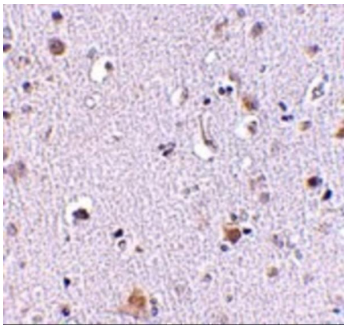
NUP160 antibody can be used for detection of NUP160 by Western blot at 0.5 - 1 ug/mL. Antibody can also be used for immunohistochemistry starting at 2.5 ug/mL. For immunofluorescence start at 20 ug/mL.

Antibody validated: Western Blot in rat samples; Immunohistochemistry in human samples and Immunofluorescence in human samples. All other applications and species not yet tested. Optimal dilutions for each application should be determined by the researcher.

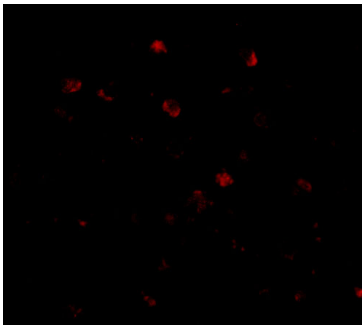
Anti-NUP160 Antibody (A05629-1) Images



Western blot analysis of NUP160 in rat brain tissue lysate with NUP160 antibody at (A) 0.5 and (B) 1 ug/mL.



Immunohistochemistry of NUP160 in human brain tissue with NUP160 antibody at 2.5 ug/mL.



Immunofluorescence of NUP160 in Human Brain cells with NUP160 antibody at 20 ug/mL.

Submit a product review to [Biocompare.com](https://www.biocompare.com)

Submit a review of this product to [Biocompare.com](https://www.biocompare.com) to receive a \$20 Amazon.com giftcard! Your reviews help your fellow scientists make the right decisions. Thank you for your contribution.



Anti-NUP160 Antibody

For Research Use Only. Not for use in diagnostic procedures.