

## Anti-Collagen alpha-1(VIII) chain COL8A1 Antibody

Catalog Number: A05638

### About COL8A1

Rapidly and transiently inhibited by phosphorylation following the generation of DNA double-stranded breaks during S-phase. This is cell cycle checkpoint and ATM-pathway dependent and appears to regulate processes involved in chromatin assembly. Isoform 3 phosphorylates and enhances the stability of the t-SNARE SNAP23, augmenting its assembly with syntaxin. Isoform 3 protects the cells from the ionizing radiation by facilitating the repair of DSBs. In vitro, phosphorylates histone H3 at 'Ser-10'.

Yamakawa A., Gene 202:193-201(1997).

Sillje H.H.W., EMBO J. 18:5691-5702(1999).

Cabaniols J.-P., Mol. Biol. Cell 10:4033-4041(1999).

### Overview

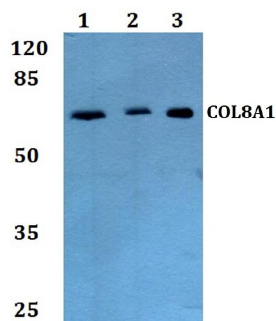
Product Name	Anti-Collagen alpha-1(VIII) chain COL8A1 Antibody
Reactive Species	Human, Mouse, Rat
Description	Boster Bio Anti-Collagen alpha-1 (VIII) chain COL8A1 Antibody catalog # A05638. Tested in WB applications. This antibody reacts with Human,Mouse,Rat.
Application	WB
Clonality	Polyclonal
Formulation	Rabbit IgG, 1mg/ml in PBS with 0.02% sodium azide, 50% glycerol, pH7.2
Storage Instructions	Store at -20°C for one year. For short term storage and frequent use, store at 4°C for up to one month. Avoid repeated freeze-thaw cycles.
Host	Rabbit
Uniprot ID	P27658

### Technical Details

Immunogen	A synthetic peptide corresponding to residues in Human COL8A1.
Predicted Reactive Species	Boar, Bovine, Canine, Golden Hamster
Isotype	IgG
Form	Liquid
Concentration	1 mg/ml
Purification	The antibody was affinity-purified from rabbit antiserum by affinity-chromatography using epitope-

	specific immunogen and the purity is > 95% (by SDS-PAGE).
Suggested Dilutions	<p>Dilute the sample so that the expected range of concentrations fall within the detection range of this kit.</p> <p>If the expected range of concentration is unknown, a pilot test should be conducted to decide the optimal dilution ratio for your samples.</p> <p>Some PubMed article(s) citing the expression level of this target are as follows:</p> <p>Boster Bio's internal QC testing used:</p> <p>WB: 1:500-1:1000</p>

## Anti-Collagen alpha-1(VIII) chain COL8A1 Antibody (A05638) Images



Western blot (WB) analysis of COL8A1 polyclonal antibody at 1:500 dilution  
Lane1:A549 whole cell lysate  
Lane2:sp2/0 whole cell lysate  
Lane3:PC12 whole cell lysate

### Submit a product review to Biocompare.com

Submit a review of this product to Biocompare.com to receive a \$20 Amazon.com giftcard! Your reviews help your fellow scientists make the right decisions. Thank you for your contribution.



Anti-Collagen alpha-1(VIII) chain COL8A1 Antibody