

## Anti-GOLPH1 ACBD3 Antibody

Catalog Number: A05645

### About ACBD3

GOLPH1, also known as GCP60, was initially identified as a Golgi protein that can interact with the integral membrane protein giantin and is thought to be involved in the maintenance of the Golgi structure. GOLPH1 has also been shown to interact with other Golgi proteins such as Golgin-160, a Golgi protein that can be cleaved by caspases-2, -3, and -7, leading to the nuclear localization of Golgin-160. GOLPH1 interaction with the Golgin-160 fragments is stronger than that with the intact Golgin-160, with its interaction regulated by the oxidation state of Cys-463 within GOLPH1, suggesting that the nuclear localization of the caspase-cleaved Golgin-160 fragments is a highly coordinated event. GOLPH1 has also been found to interact with Numb, a cytosolic signaling protein that mediates asymmetric cell division of neural progenitor cells to a daughter progenitor cell and a neuron, suggesting that Golgi fragmentation and reconstitution during the cell cycle differentially regulate Numb signaling through changes in GOLPH1 subcellular distribution and may couple cell fate with cell cycle progression.

### Overview

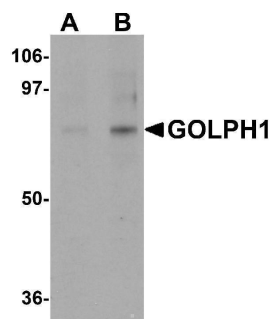
Product Name	Anti-GOLPH1 ACBD3 Antibody
Reactive Species	Human
Description	Boster Bio Anti-GOLPH1 ACBD3 Antibody (Catalog # A05645). Tested in ELISA, WB applications. This antibody reacts with Human.
Application	ELISA, WB
Clonality	Polyclonal
Formulation	GOLPH1 Antibody is supplied in PBS containing 0.02% sodium azide.
Storage Instructions	GOLPH1 antibody can be stored at 4°C for three months and -20°C, stable for up to one year. Avoid repeated freeze-thaw cycles. Antibodies should not be exposed to prolonged high temperatures.
Host	Rabbit
Uniprot ID	Q9H3P7

### Technical Details

Immunogen	GOLPH1 antibody was raised against a 16 amino acid synthetic peptide from near the amino terminus of human GOLPH1. The immunogen is located within amino acids 50 - 100 of GOLPH1.
Predicted Reactive Species	Mouse, Rat
Isotype	IgG
Form	Liquid
Concentration	1 mg/mL

Purification	GOLPH1 Antibody is affinity chromatography purified via peptide column.
Suggested Dilutions	GOLPH1 antibody can be used for detection of GOLPH1 by Western blot at 1 - 2 ug/mL. Antibody validated: Western Blot in human samples. All other applications and species not yet tested. Optimal dilutions for each application should be determined by the researcher.

## Anti-GOLPH1 ACBD3 Antibody (A05645) Images



Western blot analysis of GOLPH1 in K562 cell lysate with GOLPH1 antibody at (A) 1 and (B) 2 ug/mL.

### Submit a product review to Biocompare.com

Submit a review of this product to Biocompare.com to receive a \$20 Amazon.com giftcard! Your reviews help your fellow scientists make the right decisions. Thank you for your contribution.



Anti-GOLPH1 ACBD3 Antibody

For Research Use Only. Not for use in diagnostic procedures.