

Anti-Protein crumbs homolog 2 CRB2 Antibody

Catalog Number: A05652

About CRB2

CRB2 (Crumbs homolog 2), like its homologs CRB1 and CRB3, is similar to the *Drosophila* crumbs protein and is expressed in retina, brain and kidney. Along with other proteins, the Crumbs proteins form a complex that help set up cell polarity in developing neuroepithelial cells. At the onset of neural specification, embryonic stem cells (ESCs) upregulate CRB2, which then localizes apically in neural rosettes. Gain- and loss-of-function studies of CRB2 have shown that CRB2 is essential for the stabilization of other polarity proteins. Unlike CRB1, mutations in CRB2 do not appear to play a role in retinitis pigmentosa or in Leber congenital amaurosis.

Overview

Product Name	Anti-Protein crumbs homolog 2 CRB2 Antibody
Reactive Species	Human, Mouse, Rat
Description	Boster Bio Anti-Protein crumbs homolog 2 CRB2 Antibody (Catalog # A05652). Tested in ELISA, WB applications. This antibody reacts with Human, Mouse, Rat.
Application	ELISA, WB
Clonality	Polyclonal
Formulation	CRB2 Antibody is supplied in PBS containing 0.02% sodium azide.
Storage Instructions	CRB2 antibody can be stored at 4°C for three months and -20°C, stable for up to one year.
Host	Rabbit
Uniprot ID	Q5IJ48

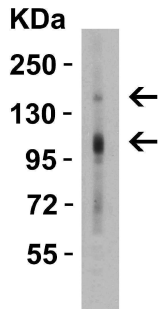
Technical Details

Immunogen	Rabbit polyclonal CRB2 antibody was raised against a 17 amino acid peptide near the center of human CRB2. The immunogen is located within amino acids 460 - 510 of CRB2.
Predicted Reactive Species	Mouse, Rat
Cross Reactivity	At least three isoforms of CRB2 are known to exist; this antibody will detect all three. CRB2 antibody is predicted to not cross-react with other members of the CRB family.
Isotype	IgG
Form	Liquid
Concentration	1 mg/mL
Purification	CRB2 Antibody is affinity chromatography purified via peptide column.

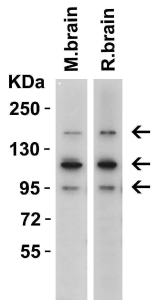
Suggested Dilutions

CRB2 antibody can be used for detection of CRB2 by Western blot at 1 ug/mL.
Antibody validated: Western Blot in human, mouse, and rat samples. All other applications and species not yet tested. Optimal dilutions for each application should be determined by the researcher.

Anti-Protein crumbs homolog 2 CRB2 Antibody (A05652) Images



WB Validation in Human Kidney Loading: 15 ug of tissue lysate Antibodies: CRB2 A05652, 1 ug/mL , 1 h incubation at RT in 5% NFDM/TBST. Secondary: Goat Anti-Rabbit IgG HRP conjugate at 1:10000 dilution.



WB Validation in Mouse and Rat Brain Loading: 15 ug of tissue lysate Antibodies: CRB2 A05652, 1 ug/mL , 1 h incubation at RT in 5% NFDM/TBST. Secondary: Goat Anti-Rabbit IgG HRP conjugate at 1:10000 dilution.

Submit a product review to [Biocompare.com](https://www.biocompare.com)

Submit a review of this product to [Biocompare.com](https://www.biocompare.com) to receive a \$20 Amazon.com giftcard! Your reviews help your fellow scientists make the right decisions. Thank you for your contribution.



Anti-Protein crumbs homolog 2 CRB2 Antibody

For Research Use Only. Not for use in diagnostic procedures.