

## Anti-EFEMP2 Antibody

Catalog Number: A05653-2

### About EFEMP2

A large number of extracellular matrix proteins have been found to contain variations of the epidermal growth factor (EGF) domain and have been implicated in functions as diverse as blood coagulation, activation of complement and determination of cell fate during development. The protein encoded by this gene contains four EGF2 domains and six calcium-binding EGF2 domains. This gene is necessary for elastic fiber formation and connective tissue development. Defects in this gene are cause of an autosomal recessive cutis laxa syndrome. Alternatively spliced transcript variants have been identified for this gene.

### Overview

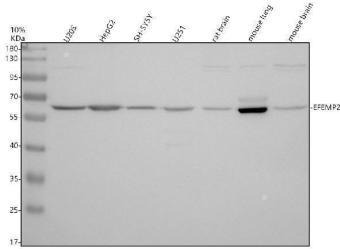
|                      |  |
|----------------------|--|
| Product Name         | Anti-EFEMP2 Antibody   |
| Reactive Species     | Human, Mouse   |
| Description          | Boster Bio Anti-EFEMP2 Antibody catalog # A05653-2. Tested in WB, IHC, IP, ELISA applications. This antibody reacts with Human, Mouse.   |
| Application          | ELISA, IP, IHC, WB   |
| Clonality            | Polyclonal   |
| Formulation          | 500 ug/ml antibody with PBS, 0.02% NaN <sub>3</sub> , 1 mg stabilizing protein and 50% glycerol<br>*This antibody is supplied in a stabilized formulation.<br>Compatibility with conjugation reactions depends on the chemistry of the conjugation method used. For conjugation methods that are not compatible with the stabilizing components present in this formulation, a carrier-free antibody format is required. |
| Storage Instructions | 12 months from date of receipt at -20°C as supplied. 6 months at 2 to 8°C after reconstitution. Avoid repeated freezing and thawing.   |
| Host                 | Rabbit   |
| Uniprot ID           | O95967   |

### Technical Details

|                     |  |
|---------------------|--|
| Immunogen           | E.coli-derived human EFEMP2 recombinant protein (Position: 146-440).                         |
| Form                | Liquid   |
| Concentration       | 500 ug/ml  |
| Purification        | Immunogen affinity purified.   |
| Suggested Dilutions | Western blot, 1:500-2000<br>Immunohistochemistry, 1:50-400<br>Immunoprecipitation, 1:250-300 |

|  |                   |
|--|-------------------|
|  | ELISA, 1:100-1000 |
|--|-------------------|

## Anti-EFEMP2 Antibody (A05653-2) Images



Western blot analysis of EFEMP2 using anti-EFEMP2 antibody (A05653-2). Electrophoresis was performed on a 10% SDS-PAGE gel at 80V (Stacking gel) / 120V (Resolving gel) for 2 hours. The sample well of each lane was loaded with 30 ug of sample under reducing conditions. Lane 1: human U2OS whole cell lysates, Lane 2: human HepG2 whole cell lysates, Lane 3: human SH-SY5Y whole cell lysates, Lane 4: human U251 whole cell lysates, Lane 5: rat brain tissue lysates, Lane 6: mouse lung tissue lysates, Lane 7: mouse brain tissue lysates. After electrophoresis, proteins were transferred to a nitrocellulose membrane at 150 mA for 50-90 minutes. Blocked the membrane with 5% non-fat milk/TBS for 1.5 hour at RT. The membrane was incubated with rabbit anti-EFEMP2 antigen affinity purified polyclonal antibody (A05653-2) at 1:1000 overnight at 4°C, then washed with TBS-0.1% Tween 3 times with 5 minutes each and probed with a goat anti-rabbit IgG-HRP secondary antibody at a dilution of 1:5000 for 1.5 hour at RT. The signal is developed using an ECL Plus Western Blotting Substrate (Catalog # AR1196-200) with Tanon 5200 system. A specific band was detected for EFEMP2 at approximately 60 kDa. The expected band size for EFEMP2 is at 49 kDa.

## Submit a product review to Biocompare.com

Submit a review of this product to Biocompare.com to receive a \$20 Amazon.com giftcard! Your reviews help your fellow scientists make the right decisions. Thank you for your contribution.



### Anti-EFEMP2 Antibody

For Research Use Only. Not for use in diagnostic procedures.