

## Anti-ERN2 Antibody

Catalog Number: A05659-1

### Overview

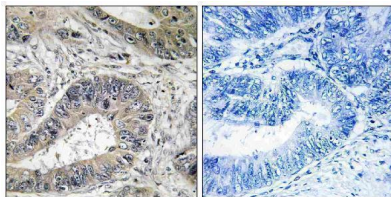
Product Name	Anti-ERN2 Antibody
Reactive Species	Human, Mouse
Description	Boster Bio Anti-ERN2 Antibody (Catalog# A05659-1). Tested in IHC, ICC, IF, ELISA applications. This antibody reacts with Human, Mouse.
Application	ELISA, IF, IHC, ICC
Clonality	Polyclonal
Formulation	PBS containing 50% glycerol, 0.5% stabilizing protein and 0.02% sodium azide. *This antibody is supplied in a stabilized formulation. Compatibility with conjugation reactions depends on the chemistry of the conjugation method used. For conjugation methods that are not compatible with the stabilizing components present in this formulation, a carrier-free antibody format is required.
Storage Instructions	Store at -20°C for one year. For short-term storage and frequent use, store at 4°C for up to one month. Avoid repeated freeze-thaw cycles.
Host	Rabbit
Uniprot ID	Q76MJ5

### Technical Details

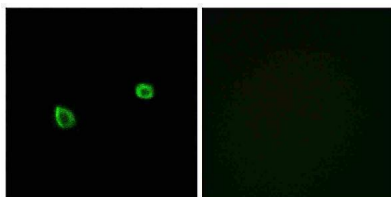
Immunogen	A peptide derived from human ERN2. Immunogen sequence location: 841-890
Isotype	Rabbit IgG
Form	Liquid
Concentration	0.5-1mg/ml, actual concentration vary by lot. Use suggested dilution ratio to decide dilution procedure.
Purification	The antibody was purified from rabbit antiserum by affinity-chromatography using immunogen.
Suggested Dilutions	IHC 1:100 - 1:300. ICC/IF 1:200 - 1:1000. ELISA: 1:10000. Not yet tested in other applications.

## Anti-ERN2 Antibody (A05659-1) Images

---



Immunohistochemistry analysis of paraffin-embedded human colon carcinoma tissue, using ERN2 Antibody. The picture on the right is blocked with the synthesized peptide.



Immunofluorescence analysis of A549 cells, using ERN2 Antibody. The picture on the right is blocked with the synthesized peptide.

---

### Submit a product review to [Biocompare.com](https://www.biocompare.com)

Submit a review of this product to [Biocompare.com](https://www.biocompare.com) to receive a \$20 Amazon.com giftcard! Your reviews help your fellow scientists make the right decisions. Thank you for your contribution.



Anti-ERN2 Antibody

For Research Use Only. Not for use in diagnostic procedures.