

Anti-Phospho-KIR3.1 (S185) KCNJ3 Antibody

Catalog Number: A05677S185

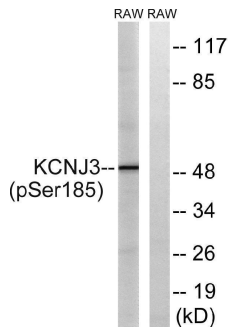
Overview

Product Name	Anti-Phospho-KIR3.1 (S185) KCNJ3 Antibody
Reactive Species	Human, Monkey, Mouse, Rat
Description	Boster Bio Anti-Phospho-KIR3.1 (S185) KCNJ3 Antibody catalog # A05677S185. Tested in WB, IHC, IF, ELISA applications. This antibody reacts with Human, Mouse, Rat, Monkey.
Application	ELISA, IF, IHC, WB
Clonality	Polyclonal
Formulation	Liquid in PBS containing 50% glycerol, 0.5% stabilizing protein and 0.02% sodium azide. *This antibody is supplied in a stabilized formulation. Compatibility with conjugation reactions depends on the chemistry of the conjugation method used. For conjugation methods that are not compatible with the stabilizing components present in this formulation, a carrier-free antibody format is required.
Storage Instructions	Store at -20°C for one year. For short term storage and frequent use, store at 4°C for up to one month. Avoid repeated freeze-thaw cycles.
Host	Rabbit
Uniprot ID	P48549

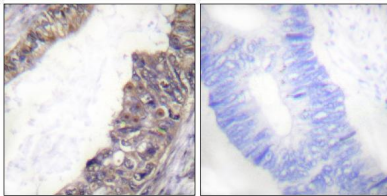
Technical Details

Immunogen	The antiserum was produced against synthesized peptide derived from human GIRK1/KIR3.1/KCNJ3 around the phosphorylation site of Ser185. AA range:151-200
Isotype	IgG
Form	Liquid
Concentration	1 mg/ml
Purification	The antibody was affinity-purified from rabbit antiserum by affinity-chromatography using epitope-specific immunogen.
Suggested Dilutions	WB 1:500-1:2000 IHC 1:100-1:300 IF 1:200-1:1000 ELISA 1:20000

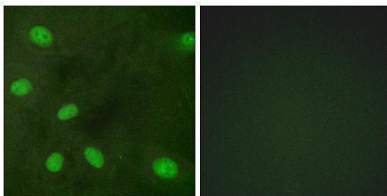
Anti-Phospho-KIR3.1 (S185) KCNJ3 Antibody (A05677S185) Images



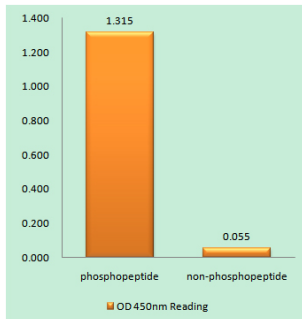
Western blot analysis of lysates from RAW264.7 cells treated with Insulin 0.01U/ml 15', using GIRK1/KIR3.1/KCNJ3 (Phospho-Ser185) Antibody. The lane on the right is blocked with the phospho peptide.



Immunohistochemistry analysis of paraffin-embedded human colon carcinoma, using GIRK1/KIR3.1/KCNJ3 (Phospho-Ser185) Antibody. The picture on the right is blocked with the phospho peptide.



Immunofluorescence analysis of HeLa cells, using GIRK1/KIR3.1/KCNJ3 (Phospho-Ser185) Antibody. The picture on the right is blocked with the phospho peptide.



Enzyme-Linked Immunosorbent Assay (Phospho-ELISA) for Immunogen Phosphopeptide (Phospho-left) and Non-Phosphopeptide (Phospho-right), using GIRK1/KIR3.1/KCNJ3 (Phospho-Ser185) Antibody

Submit a product review to [Biocompare.com](https://www.biocompare.com)

Submit a review of this product to [Biocompare.com](https://www.biocompare.com) to receive a \$20 Amazon.com giftcard! Your reviews help your fellow scientists make the right decisions. Thank you for your contribution.



Anti-Phospho-KIR3.1 (S185) KCNJ3 Antibody

For Research Use Only. Not for use in diagnostic procedures.