

Anti-REG3A Antibody

Catalog Number: A05686

About REG3A

SmarcAL1 (SWI/SNF-related matrix-associated actin-dependent regulator of chromatin a-like 1) is also known as HARP, HepA Related Protein, HHARP, SMARCA like Protein 1 and SWI/SNF Related. SmarcAL1 is a member of the SWI/SNF family of proteins. Members of this family have helicase and ATPase activities and are thought to regulate transcription of certain genes by altering the chromatin structure around those genes. The encoded protein shows sequence similarity to the E. coli RNA polymerase-binding protein HepA. Mutations in this gene are a cause of Schimke immunosseous dysplasia (SIOD), an autosomal recessive disorder with the diagnostic features of spondyloepiphyseal dysplasia, renal dysfunction, and T-cell immunodeficiency.

Overview

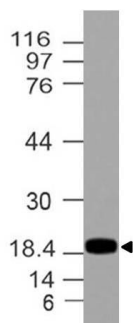
| | |
|----------------------|---|
| Product Name | Anti-REG3A Antibody |
| Reactive Species | Human |
| Description | Boster Bio Anti-REG3A Antibody (Catalog# A05686). Tested in WB application(s). This antibody reacts with Human. |
| Application | WB |
| Clonality | Polyclonal |
| Formulation | 100 µg in 200 µl PBS containing 0.05% stabilizing protein and 0.05% sodium azide *This antibody is supplied in a stabilized formulation. Compatibility with conjugation reactions depends on the chemistry of the conjugation method used. For conjugation methods that are not compatible with the stabilizing components present in this formulation, a carrier-free antibody format is required. |
| Storage Instructions | Store the antibody at 4°C, stable for 6 months. For long-term storage, store at -20°C. Avoid repeated freeze and thaw cycles. |
| Host | Rabbit |
| Uniprot ID | Q06141 |

Technical Details

| | |
|----------------------------|--|
| Immunogen | A full length recombinant REG3A protein |
| Predicted Reactive Species | Chimpanzee |
| Cross Reactivity | No cross reactivity with other proteins. |
| Isotype | Rabbit IgG |
| Form | Liquid |

| | |
|---------------------|--|
| Concentration | 0.5-1mg/ml, actual concentration vary by lot. Use suggested dilution ratio to decide dilution procedure. |
| Purification | Protein A Chromatography |
| Suggested Dilutions | Western blot: 0.1-0.5 μ g/ml |

Anti-REG3A Antibody (A05686) Images



Westren blot analysis of REG3A. Anti-REG3A antibody was used at 0.1 μ g/ml

Submit a product review to Biocompare.com

Submit a review of this product to Biocompare.com to receive a \$20 Amazon.com giftcard! Your reviews help your fellow scientists make the right decisions. Thank you for your contribution.



Anti-REG3A Antibody

For Research Use Only. Not for use in diagnostic procedures.