

Anti-Acetyl-eIF5A/eIF5A2 (K47) Antibody

Catalog Number: A05688

About EIF5A2

ROC2 also known as RING-box protein 2, Rbx2, RING finger protein 7, Regulator of cullins 2, CKII beta-binding protein 1, and CKBBP1, is a probable component of the SCF (SKP1-CUL1-F-box protein) E3 ubiquitin ligase complexes, which mediate the ubiquitination and subsequent proteasomal degradation of target proteins involved in cell cycle progression, signal transduction and transcription. ROC2 appears to recruit the E2 ubiquitination enzyme through the RING-type zinc finger in a manner similar to CDC34, and brings it into close proximity to the substrate. ROC2 may play a role in protecting cells from apoptosis induced by redox agents. ROC2 has a cytoplasmic and nuclear localization and is expressed in heart, liver, skeletal muscle and pancreas tissues, and at very low levels in brain, placenta and lung. 1,10-phenanthroline induces ROC2 expression. The RING-type zinc finger domain is essential for ubiquitin ligase activity. Phosphorylation by CK2 is required for efficient degradation of NFKBIA and CDKN1B.

Overview

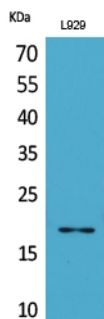
Product Name	Anti-Acetyl-eIF5A/eIF5A2 (K47) Antibody
Reactive Species	Human, Mouse, Rat
Description	Boster Bio Anti-Acetyl-eIF5A/eIF5A2 (K47) Antibody catalog # A05688. Tested in WB applications. This antibody reacts with Human, Mouse, Rat.
Application	WB
Clonality	Polyclonal 1E3
Formulation	Liquid in PBS containing 50% glycerol, 0.5% BSA and 0.02% sodium azide.
Storage Instructions	Store at -20°C for one year. For short term storage and frequent use, store at 4°C for up to one month. Avoid repeated freeze-thaw cycles.
Host	Rabbit
Uniprot ID	Q9GZV4

Technical Details

Immunogen	Synthesized peptide derived from human eIF5A/eIF5A2 around the acetylation site of K47.
Predicted Reactive Species	Bovine, Canine, Equine, Guinea Pig, Rabbit, Zebrafish
Cross Reactivity	No cross reactivity with other proteins.
Isotype	IgG
Form	Liquid
Concentration	This antibody's concentration is >0.5mg/ml.

Purification	Immunogen affinity purified
Suggested Dilutions	<p>Dilute the sample so that the expected range of concentrations fall within the detection range of this kit.</p> <p>If the expected range of concentration is unknown, a pilot test should be conducted to decide the optimal dilution ratio for your samples.</p> <p>Some PubMed article(s) citing the expression level of this target are as follows:</p> <p>Boster Bio's internal QC testing used:</p> <p>User needs to optimize the dilution ratio for this antibody.</p>

Anti-Acetyl-eIF5A/eIF5A2 (K47) Antibody (A05688) Images



Western Blot (WB) analysis of L929 lysis using antibody diluted at 1:1000.

Submit a product review to Biocompare.com

Submit a review of this product to Biocompare.com to receive a \$20 Amazon.com giftcard! Your reviews help your fellow scientists make the right decisions. Thank you for your contribution.



Anti-Acetyl-eIF5A/eIF5A2 (K47) Antibody