

Anti-GPRC6A Antibody

Catalog Number: A05697

About GPRC6A

ROC2 also known as RING-box protein 2, Rbx2, RING finger protein 7, Regulator of cullins 2, CKII beta-binding protein 1, and CKBBP1, is a probable component of the SCF (SKP1-CUL1-F-box protein) E3 ubiquitin ligase complexes, which mediate the ubiquitination and subsequent proteasomal degradation of target proteins involved in cell cycle progression, signal transduction and transcription. ROC2 appears to recruit the E2 ubiquitination enzyme through the RING-type zinc finger in a manner similar to CDC34, and brings it into close proximity to the substrate. ROC2 may play a role in protecting cells from apoptosis induced by redox agents. ROC2 has a cytoplasmic and nuclear localization and is expressed in heart, liver, skeletal muscle and pancreas tissues, and at very low levels in brain, placenta and lung. 1,10-phenanthroline induces ROC2 expression. The RING-type zinc finger domain is essential for ubiquitin ligase activity. Phosphorylation by CK2 is required for efficient degradation of NFKBIA and CDKN1B.

Overview

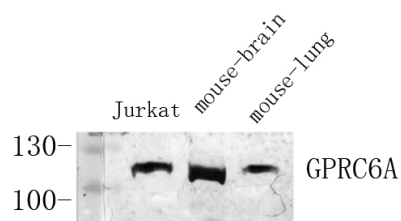
Product Name	Anti-GPRC6A Antibody
Reactive Species	Human
Description	Boster Bio Anti-GPRC6A Antibody catalog # A05697. Tested in WB applications. This antibody reacts with Human.
Application	WB
Clonality	Polyclonal 1E3
Formulation	Liquid in PBS containing 50% glycerol, 0.5% BSA and 0.02% sodium azide.
Storage Instructions	Store at -20°C for one year. For short term storage and frequent use, store at 4°C for up to one month. Avoid repeated freeze-thaw cycles.
Host	Rabbit
Uniprot ID	Q5T6X5

Technical Details

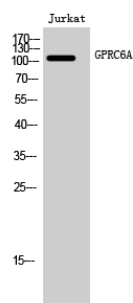
Immunogen	Synthesized peptide derived from the Internal region of human GPRC6A. at AA range: 440-520
Predicted Reactive Species	Bovine, Canine, Equine, Guinea Pig, Rabbit, Zebrafish
Cross Reactivity	No cross reactivity with other proteins.
Isotype	IgG
Form	Liquid
Concentration	This antibody's concentration is >0.5mg/ml.

Purification	Immunogen affinity purified
Suggested Dilutions	<p>Dilute the sample so that the expected range of concentrations fall within the detection range of this kit.</p> <p>If the expected range of concentration is unknown, a pilot test should be conducted to decide the optimal dilution ratio for your samples.</p> <p>Some PubMed article(s) citing the expression level of this target are as follows:</p> <p>Boster Bio's internal QC testing used:</p> <p>WB, 1:500-1:2000</p>

Anti-GPRC6A Antibody (A05697) Images



Western Blot (WB) analysis of specific cells using antibody diluted at 1:1000.



Western Blot (WB) analysis of Jurkat cells using GPRC6A Polyclonal antibody.

Submit a product review to Biocompare.com

Submit a review of this product to Biocompare.com to receive a \$20 Amazon.com giftcard! Your reviews help your fellow scientists make the right decisions. Thank you for your contribution.



Anti-GPRC6A Antibody