

Anti-IL-22 Receptor IL22RA1 Antibody

Catalog Number: A05705

About IL22RA1

A novel cytokine, designated IL-TIF for IL-10 related T cell-derived inducible factor and IL-22, was recently identified. The receptor for IL-22 (IL-22R, also termed CRF2-9 and IL-TIF-R1 chain) is a new member of the class II cytokine receptor family. IL-22R forms a complex with IL-10 receptor beta chain and mediates IL-22 signaling. IL-22 and its receptor activate JAK-STAT signaling pathway. IL22R is expressed in normal liver and kidney and their cell lines HepG2 and TK-10. A soluble form of IL-22 receptor, also termed IL-22 binding protein (IL-22BP) and IL-22 receptor-alpha 2 (IL-22RA2), was identified very recently. IL-22BP prevents binding of IL-22 to the functional cell surface IL-22R complex and neutralizes IL-22 activity. LPS induces IL-22 expression, which indicates the role of IL-22 in inflammatory response.

Overview

Product Name	Anti-IL-22 Receptor IL22RA1 Antibody
Reactive Species	Human, Rat
Description	Boster Bio Anti-IL-22 Receptor IL22RA1 Antibody (Catalog # A05705). Tested in ELISA, WB applications. This antibody reacts with Human, Rat.
Application	ELISA, WB
Clonality	Polyclonal
Formulation	IL-22 Receptor Antibody is supplied in PBS containing 0.02% sodium azide.
Storage Instructions	IL-22 Receptor antibody can be stored at 4°C for three months and -20°C, stable for up to one year. Avoid repeated freeze-thaw cycles. Antibodies should not be exposed to prolonged high temperatures.
Host	Rabbit
Uniprot ID	Q8N6P7

Technical Details

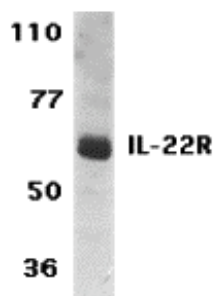
Immunogen	IL-22 antibody was raised against a 15 amino acid peptide near the carboxy terminus of human IL-22. The immunogen is located within the last 50 amino acids of IL-22 Receptor.
Predicted Reactive Species	Bovine, Mouse
Isotype	IgG
Form	Liquid
Concentration	1 mg/ml
Purification	IL-22 Receptor Antibody is affinity chromatography purified via peptide column.

Suggested Dilutions

IL-22 receptor antibody can be used for detection of IL-22 receptor by Western blot at 1 ug/mL. An approximately 62 kDa band can be detected.

Antibody validated: Western Blot in human samples. All other applications and species not yet tested. Optimal dilutions for each application should be determined by the researcher.

Anti-IL-22 Receptor IL22RA1 Antibody (A05705) Images



Western blot analysis of IL-22 Receptor expression in human HepG2 cell lysate with IL-22 Receptor antibody at 1 ug/ml.

Submit a product review to Biocompare.com

Submit a review of this product to Biocompare.com to receive a \$20 Amazon.com giftcard! Your reviews help your fellow scientists make the right decisions. Thank you for your contribution.



Anti-IL-22 Receptor IL22RA1 Antibody

For Research Use Only. Not for use in diagnostic procedures.