

## Anti-IL-22 Receptor IL22RA1 Antibody

Catalog Number: A05705-1

### About IL22RA1

A novel cytokine, designated IL-TIF for IL-10 related T cell-derived inducible factor and IL-22, was recently identified. The receptor for IL-22 (IL-22R, also termed CRF2-9 and IL-TIF-R1 chain) is a new member of the class II cytokine receptor family. IL-22R forms a complex with IL-10 receptor beta chain and mediates IL-22 signaling. IL-22 and its receptor activate JAK-STAT signaling pathway. IL22R is expressed in normal liver and kidney and their cell lines HepG2 and TK-10. A soluble form of IL-22 receptor, also termed IL-22 binding protein (IL-22BP) and IL-22 receptor-alpha 2 (IL-22RA2), was identified very recently. IL-22BP prevents binding of IL-22 to the functional cell surface IL-22R complex and neutralizes IL-22 activity. LPS induces IL-22 expression, which indicates the role of IL-22 in inflammatory response.

### Overview

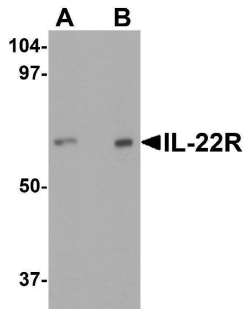
|                      |   |
|----------------------|---|
| Product Name         | Anti-IL-22 Receptor IL22RA1 Antibody  |
| Reactive Species     | Human, Rat  |
| Description          | Boster Bio Anti-IL-22 Receptor IL22RA1 Antibody (Catalog # A05705-1). Tested in ELISA, WB, IHC-P, ICC, IF applications. This antibody reacts with Human, Rat.   |
| Application          | ELISA, IF, IHC-P, ICC, WB   |
| Clonality            | Polyclonal  |
| Formulation          | IL-22 Receptor Antibody is supplied in PBS containing 0.02% sodium azide.   |
| Storage Instructions | IL-22 Receptor antibody can be stored at 4°C for three months and -20°C, stable for up to one year. Avoid repeated freeze-thaw cycles. Antibodies should not be exposed to prolonged high temperatures. |
| Host                 | Rabbit  |
| Uniprot ID           | Q8N6P7  |

### Technical Details

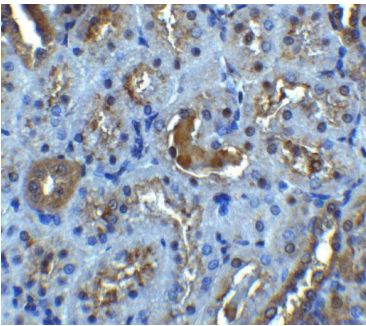
|                            |  |
|----------------------------|--|
| Immunogen                  | IL-22 receptor antibody was raised against a synthetic peptide corresponding to amino acids near the amino terminus of human IL-22 receptor precursor. The immunogen is located within the first 50 amino acids of IL-22 Receptor. |
| Predicted Reactive Species | Bovine, Mouse  |
| Isotype                    | IgG  |
| Form                       | Liquid   |
| Concentration              | 1 mg/mL  |

|                     |  |
|---------------------|--|
| Purification        | IL-22 Receptor Antibody is affinity chromatography purified via peptide column.  |
| Suggested Dilutions | IL-22 receptor antibody can be used for detection of IL-22 receptor by Western blot at 0.5-1 ug/mL. Antibody can also be used for immunocytochemistry starting at 10 ug/mL and immunohistochemistry starting at 5 ug/mL. For immunofluorescence start at 10 ug/mL. Antibody validated: Western Blot in human samples; Immunohistochemistry in rat samples; Immunocytochemistry in human samples and Immunofluorescence in human and rat samples. All other applications and species not yet tested. Optimal dilutions for each application should be determined by the researcher. |

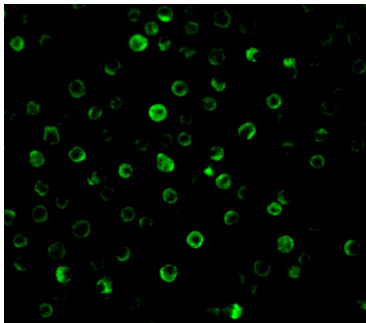
## Anti-IL-22 Receptor IL22RA1 Antibody (A05705-1) Images



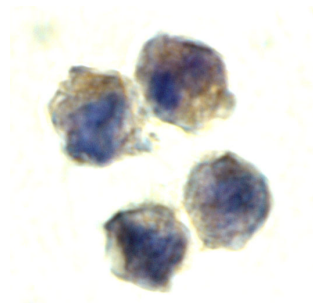
Western blot analysis of IL-22 receptor expression in human HepG2 cell lysate with IL-22 receptor antibody at (A) 0.5 and (B) 1 ug/ml.



Immunohistochemistry of IL-22R in rat kidney tissue with IL-22R antibody at 5 ug/mL.

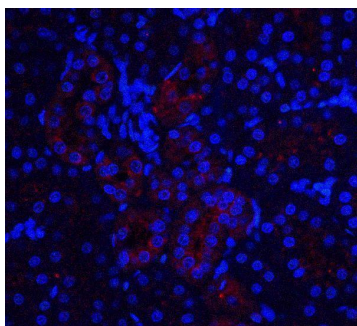


Immunofluorescence of IL-22 receptor in HepG2 cells with IL-22 receptor antibody at 10 ug/mL.



Immunocytochemistry of IL-22 receptor in HepG2 cells with IL-22 receptor antibody at 10 ug/mL.

Immunofluorescence of IL-22R in rat kidney tissue with IL-22R antibody at 20 ug/ml.



## Submit a product review to [Biocompare.com](https://www.biocompare.com)

Submit a review of this product to [Biocompare.com](https://www.biocompare.com) to receive a \$20 Amazon.com giftcard! Your reviews help your fellow scientists make the right decisions. Thank you for your contribution.



Anti-IL-22 Receptor IL22RA1 Antibody

For Research Use Only. Not for use in diagnostic procedures.