

## Anti-Protein Wiz WIZ Antibody

Catalog Number: A05707

### About WIZ

WIZ, also known as ZNF803, was initially identified in a mouse cerebellum cDNA library screen and its message was found to be expressed in the granule cell layers of the cerebellum as well as in the dentate gyrus and olfactory bulb. Later analysis indicates however that WIZ is ubiquitously expressed. WIZ is a nuclear protein that co-localizes with G9a, a histone methyltransferase responsible for mono- and dimethylation of H3K9 at euchromatic regions. WIZ can also associate with CtBP family proteins, known to be transcriptional co-repressors, and has been suggested to link G9a/GLP complexes to the CtBP co-repressor machinery, possibly regulating complex stability and gene silencing.

### Overview

Product Name	Anti-Protein Wiz WIZ Antibody
Reactive Species	Human, Mouse, Rat
Description	Boster Bio Anti-Protein Wiz WIZ Antibody (Catalog # A05707). Tested in ELISA, WB, IHC-P, IF applications. This antibody reacts with Human, Mouse, Rat.
Application	ELISA, IF, IHC-P, WB
Clonality	Polyclonal
Formulation	WIZ Antibody is supplied in PBS containing 0.02% sodium azide.
Storage Instructions	WIZ antibody can be stored at 4°C for three months and -20°C, stable for up to one year. Avoid repeated freeze-thaw cycles. Antibodies should not be exposed to prolonged high temperatures.
Host	Rabbit
Uniprot ID	O95785

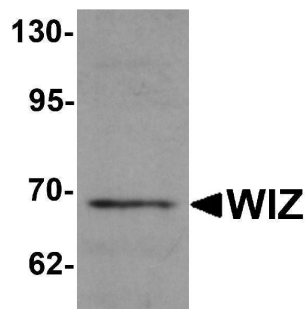
### Technical Details

Immunogen	WIZ antibody was raised against a 17 amino acid synthetic peptide near the carboxy terminus of human TFF3. The immunogen is located within the last 50 amino acids of WIZ.
Predicted Reactive Species	Bovine, Mouse
Cross Reactivity	At least four isoforms of WIZ are known to exist; this antibody will detect all four.
Isotype	IgG
Form	Liquid
Concentration	1 mg/mL
Purification	WIZ Antibody is affinity chromatography purified via peptide column.

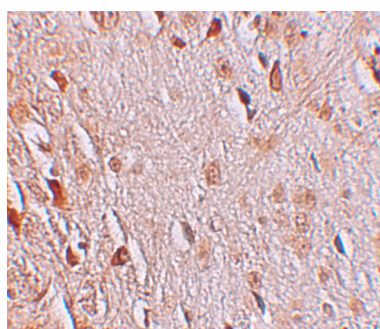
Suggested Dilutions

WIZ antibody can be used for detection of WIZ by Western blot at 1 ug/mL. Antibody can also be used for immunohistochemistry starting at 2.5 ug/mL. For immunofluorescence start at 20 ug/mL. Antibody validated: Western Blot in rat samples; Immunohistochemistry in human samples and Immunofluorescence in human samples. All other applications and species not yet tested. Optimal dilutions for each application should be determined by the researcher.

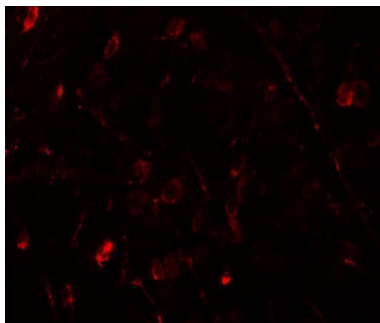
## Anti-Protein Wiz WIZ Antibody (A05707) Images



Western blot analysis of WIZ in rat lung tissue lysate with WIZ antibody at 1 ug/mL.



Immunohistochemistry of WIZ in human brain tissue with WIZ antibody at 2.5 ug/mL.



Immunofluorescence of WIZ in human brain tissue with WIZ antibody at 20 ug/mL.

### Submit a product review to [Biocompare.com](https://www.biocompare.com)

Submit a review of this product to [Biocompare.com](https://www.biocompare.com) to receive a \$20 Amazon.com giftcard! Your reviews help your fellow scientists make the right decisions. Thank you for your contribution.



Anti-Protein Wiz WIZ Antibody

For Research Use Only. Not for use in diagnostic procedures.