

Anti-Vam6/Vps39-like protein VPS39 Antibody

Catalog Number: A05711

About VPS39

VPS39 is the mammalian homolog of the yeast vacuolar protein VAM6, that in mammals, promotes lysosome clustering and fusion in vivo. VPS39 is also thought to modulate the TGF-beta response by coupling the TGF-beta receptor complex to the Smad pathway. Similar to the related protein TRAP1, the VPS39 protein is essential for early embryonic development, with mice lacking VPS39 dying at or before E6.5.

Overview

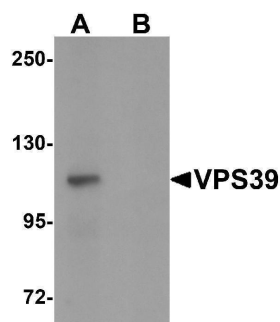
Product Name	Anti-Vam6/Vps39-like protein VPS39 Antibody
Reactive Species	Human, Mouse, Rat
Description	Boster Bio Anti-Vam6/Vps39-like protein VPS39 Antibody (Catalog # A05711). Tested in ELISA, WB, IHC-P, IF applications. This antibody reacts with Human, Mouse, Rat.
Application	ELISA, IF, IHC-P, WB
Clonality	Polyclonal
Formulation	VPS39 Antibody is supplied in PBS containing 0.02% sodium azide.
Storage Instructions	VPS39 antibody can be stored at 4°C for three months and -20°C, stable for up to one year. Avoid repeated freeze-thaw cycles. Antibodies should not be exposed to prolonged high temperatures.
Host	Rabbit
Uniprot ID	Q96JC1

Technical Details

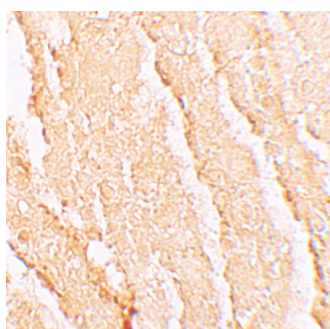
Immunogen	VPS39 antibody was raised against a 18 amino acid synthetic peptide near the carboxy terminus of human VPS39. The immunogen is located within amino acids 710 - 760 of VPS39.
Predicted Reactive Species	Bovine, Mouse
Cross Reactivity	At least four isoforms of VPS39 are known to exist; this antibody will detect all four. VPS39 antibody is predicted not to cross-react with TRAP1.
Isotype	IgG
Form	Liquid
Concentration	1 mg/mL
Purification	VPS39 Antibody is affinity chromatography purified via peptide column.
Suggested Dilutions	VPS39 antibody can be used for detection of VPS39 by Western blot at 0.5 ug/mL. Antibody can also

be used for immunohistochemistry starting at 5 ug/mL. For immunofluorescence start at 5 ug/mL. Antibody validated: Western Blot in rat samples; Immunohistochemistry in mouse samples and Immunofluorescence in human and mouse samples. All other applications and species not yet tested. Optimal dilutions for each application should be determined by the researcher.

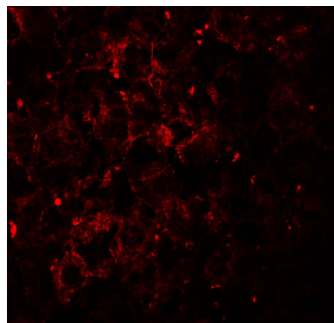
Anti-Vam6/Vps39-like protein VPS39 Antibody (A05711) Images



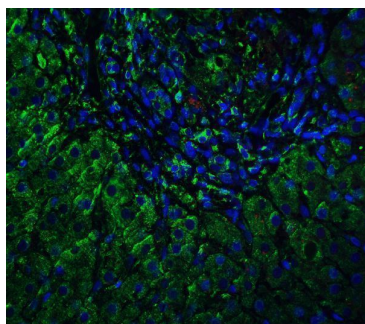
Western blot analysis of VPS39 in rat liver tissue lysate with VPS39 antibody at 0.5 ug/mL in (A) the absence and (B) the presence of blocking peptide.



Immunohistochemistry of VPS39 in mouse liver tissue with VPS39 antibody at 5 ug/mL.



Immunofluorescence of VPS39 in mouse liver tissue with VPS39 antibody at 20 ug/mL.



Immunofluorescence of VPS39 in human liver tissue with VPS39 antibody at 5 ug/ml. Green: VPS39 antibody (A05711)
Red: Phalloidin staining Blue: DAPI staining

Submit a product review to Biocompare.com

Submit a review of this product to Biocompare.com to receive a \$20 Amazon.com giftcard! Your reviews help your fellow scientists make the right decisions. Thank you for your contribution.



Anti-Vam6/Vps39-like protein VPS39 Antibody

For Research Use Only. Not for use in diagnostic procedures.