

## Anti-40S ribosomal protein S24 RPS24 Antibody

Catalog Number: A05730

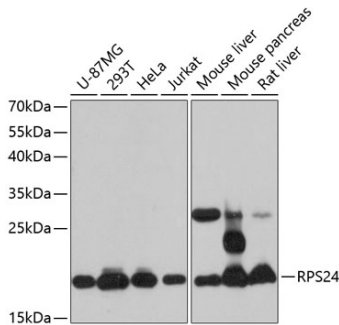
### Overview

Product Name	Anti-40S ribosomal protein S24 RPS24 Antibody
Reactive Species	Human, Mouse, Rat
Description	Boster Bio Anti-40S ribosomal protein S24 RPS24 Antibody catalog # A05730. Tested in WB,IHC,IP applications. This antibody reacts with Human,Mouse,Rat.
Application	IP, IHC, WB
Clonality	Polyclonal
Formulation	Rabbit IgG, 1mg/ml in PBS with 0.02% sodium azide, 50% glycerol, pH7.2
Storage Instructions	Store at -20°C for one year. For short term storage and frequent use, store at 4°C for up to one month. Avoid repeated freeze-thaw cycles.
Host	Rabbit
Uniprot ID	P62847

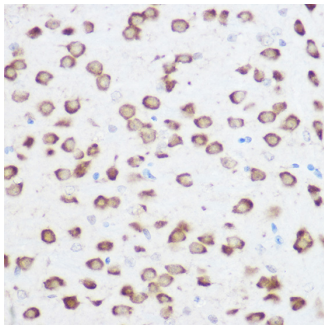
### Technical Details

Immunogen	Recombinant fusion protein of human RPS24(NP_148982.1).
Isotype	IgG
Form	Liquid
Concentration	1 mg/ml
Purification	The antibody was affinity-purified from rabbit antiserum by affinity-chromatography using epitope-specific immunogen and the purity is > 95% (by SDS-PAGE).
Suggested Dilutions	WB: 1:500-1:2000 IHC: 1:50-1:200 IP: 1:50-1:100

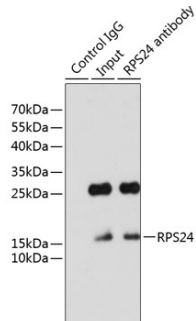
## Anti-40S ribosomal protein S24 RPS24 Antibody (A05730) Images



Western blot analysis of extracts of various cell lines, using RPS24 antibody at 1:3000 dilution. Secondary antibody: HRP Goat Anti-Rabbit IgG at 1:10000 dilution. Lysates/proteins: 25ug per lane. Blocking buffer: 3% nonfat dry milk in TBST. Detection: ECL Basic Kit. Exposure time: 30s.



Immunohistochemistry of paraffin-embedded rat brain using RPS24 Rabbit pAb at dilution of 1:200. Perform high pressure antigen retrieval with 10 mM citrate buffer pH 6.0 before commencing with IHC staining protocol.



Immunoprecipitation analysis of 200ug extracts of HeLa cells using 3ug RPS24 antibody. Western blot was performed from the immunoprecipitate using RPS24 antibody at a dilution of 1:1000.

### Submit a product review to [Biocompare.com](https://www.biocompare.com)

Submit a review of this product to [Biocompare.com](https://www.biocompare.com) to receive a \$20 Amazon.com giftcard! Your reviews help your fellow scientists make the right decisions. Thank you for your contribution.



Anti-40S ribosomal protein S24 RPS24 Antibody

For Research Use Only. Not for use in diagnostic procedures.