

Anti-AHA1/AHSA1 Antibody Picoband®

Catalog Number: A05733

About AHSA1

Activator of 90 kDa heat shock protein ATPase homolog 1 is an enzyme that in humans is encoded by the AHSA1 gene. The International Radiation Hybrid Mapping Consortium mapped the AHSA1 gene to chromosome 14. It acts as a co-chaperone of HSP90AA1. AHSA1 competes with the inhibitory co-chaperone FNIP1 for binding to HSP90AA1, thereby providing a reciprocal regulatory mechanism for chaperoning of client proteins

Overview

Product Name	Anti-AHA1/AHSA1 Antibody Picoband®
Reactive Species	Human, Monkey
Description	Boster Bio Anti-AHA1/AHSA1 Antibody Picoband® catalog # A05733. Tested in ELISA, WB applications. This antibody reacts with Human, Monkey. The brand Picoband indicates this is a premium antibody that guarantees superior quality, high affinity, and strong signals with minimal background in Western blot applications. Only our best-performing antibodies are designated as Picoband, ensuring unmatched performance.
Application	ELISA, WB
Clonality	Polyclonal
Formulation	Each vial contains 4mg Trehalose, 0.9mg NaCl, 0.2mg Na ₂ HPO ₄ , 0.05mg NaN ₃ .
Storage Instructions	Store at -20°C for one year from date of receipt. After reconstitution, at 4°C for one month. It can also be aliquotted and stored frozen at -20°C for six months. Avoid repeated freeze-thaw cycles.
Host	Rabbit
Uniprot ID	O95433

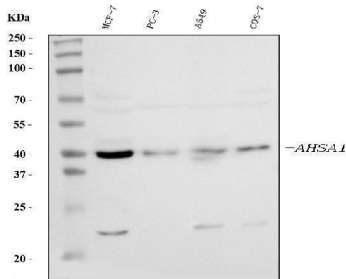
Technical Details

Immunogen	E. coli-derived human AHA1 recombinant protein (Position: N21-F338).
Recommended Detection Systems	Boster recommends Enhanced Chemiluminescent Kit with anti-Rabbit IgG (EK1002) for Western blot.
Cross Reactivity	No cross-reactivity with other proteins.
Isotype	Rabbit IgG
Form	Lyophilized
Concentration	Adding 0.2 ml of distilled water will yield a concentration of 500 ug/ml.
Purification	Immunogen affinity purified.

Suggested Dilutions

Western blot, 0.25-0.5ug/ml
ELISA, 0.1-0.5ug/ml

Anti-AHA1/AHSA1 Antibody Picoband® (A05733) Images



Western blot analysis of AHA1 using anti-AHA1 antibody (A05733). Electrophoresis was performed on a 5-20% SDS-PAGE gel at 70V (Stacking gel) / 90V (Resolving gel) for 2-3 hours. The sample well of each lane was loaded with 30 ug of sample under reducing conditions. Lane 1: human MCF-7 whole cell lysates, Lane 2: human PC-3 whole cell lysates, Lane 3: human A549 whole cell lysates, Lane 4: monkey COS-7 whole cell lysates. After electrophoresis, proteins were transferred to a nitrocellulose membrane at 150 mA for 50-90 minutes. Blocked the membrane with 5% non-fat milk/TBS for 1.5 hour at RT. The membrane was incubated with rabbit anti-AHA1 antigen affinity purified polyclonal antibody (Catalog # A05733) at 0.5 ug/mL overnight at 4°C, then washed with TBS-0.1%Tween 3 times with 5 minutes each and probed with a goat anti-rabbit IgG-HRP secondary antibody at a dilution of 1:5000 for 1.5 hour at RT. The signal is developed using an Enhanced Chemiluminescent detection (ECL) kit (Catalog # EK1002) with Tanon 5200 system. A specific band was detected for AHA1 at approximately 40 kDa. The expected band size for AHA1 is at 38 kDa.

Submit a product review to Biocompare.com

Submit a review of this product to Biocompare.com to receive a \$20 Amazon.com giftcard! Your reviews help your fellow scientists make the right decisions. Thank you for your contribution.



Anti-AHA1/AHSA1 Antibody

For Research Use Only. Not for use in diagnostic procedures.