

Anti-IFI30 Antibody Picoband®

Catalog Number: A05754-4

About IFI30

Gamma-interferon-inducible lysosomal thiol reductase is an enzyme that, in humans, is encoded by the IFI30 gene. The protein encoded by this gene is a lysosomal thiol reductase that at low pH can reduce protein disulfide bonds. The enzyme is expressed constitutively in antigen-presenting cells and induced by gamma-interferon in other cell types. This enzyme has an important role in MHC class II-restricted antigen processing.

Overview

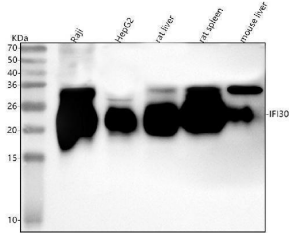
Product Name	Anti-IFI30 Antibody Picoband®
Reactive Species	Human, Mouse, Rat
Description	Boster Bio Anti-IFI30 Antibody Picoband® catalog # A05754-4. Tested in WB, FCM, ELISA applications. This antibody reacts with Human, Mouse, Rat. The brand Picoband indicates this is a premium antibody that guarantees superior quality, high affinity, and strong signals with minimal background in Western blot applications. Only our best-performing antibodies are designated as Picoband, ensuring unmatched performance.
Application	ELISA, Flow Cytometry, WB
Clonality	Polyclonal
Formulation	Each vial contains 4 mg Trehalose, 0.9 mg NaCl, 0.2 mg Na ₂ HPO ₄ .
Storage Instructions	At -20°C for one year from date of receipt. After reconstitution, at 4°C for one month. It can also be aliquotted and stored frozen at -20°C for six months. Avoid repeated freezing and thawing.
Host	Rabbit
Uniprot ID	P13284

Technical Details

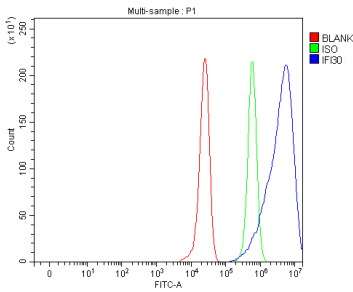
Immunogen	E.coli-derived human IFI30 recombinant protein (Position: S27-K250). Human IFI30 shares 66.3% and 68.8% amino acid (aa) sequence identity with mouse and rat IFI30, respectively.
Recommended Detection Systems	Boster recommends Enhanced Chemiluminescent Kit with anti-Rabbit IgG (EK1002) for Western blot.
Form	Lyophilized
Concentration	Adding 0.2 ml of distilled water will yield a concentration of 500 µg/ml.
Purification	Immunogen affinity purified.
Suggested Dilutions	Western blot, 0.1-0.25 µg/ml, Human, Mouse, Rat Flow Cytometry (Fixed), 1-3 µg/1x10 ⁶ cells, Human

	ELISA, 0.1-0.5 ug/ml, -
--	-------------------------

Anti-IFI30 Antibody Picoband® (A05754-4) Images



Western blot analysis of IFI30 using anti-IFI30 antibody (A05754-4). Electrophoresis was performed on a 5-20% SDS-PAGE gel at 70V (Stacking gel) / 90V (Resolving gel) for 2-3 hours. The sample well of each lane was loaded with 30 ug of sample under reducing conditions. Lane 1: human Raji whole cell lysates, Lane 2: human HepG2 whole cell lysates, Lane 3: rat liver tissue lysates, Lane 4: rat spleen tissue lysates, Lane 5: mouse liver tissue lysates. After electrophoresis, proteins were transferred to a nitrocellulose membrane at 150 mA for 50-90 minutes. Blocked the membrane with 5% non-fat milk/TBS for 1.5 hour at RT. The membrane was incubated with rabbit anti-IFI30 antigen affinity purified polyclonal antibody (Catalog # A05754-4) at 0.25 ug/mL overnight at 4°C, then washed with TBS-0.1%Tween 3 times with 5 minutes each and probed with a goat anti-rabbit IgG-HRP secondary antibody at a dilution of 1:5000 for 1.5 hour at RT. The signal is developed using an Enhanced Chemiluminescent detection (ECL) kit (Catalog # EK1002) with Tanon 5200 system. A specific band was detected for IFI30 at approximately 23 kDa. The expected band size for IFI30 is at 28 kDa.



Flow Cytometry analysis of HepG2 cells using anti-IFI30 antibody (A05754-4). Overlay histogram showing HepG2 cells stained with A05754-4 (Blue line). The cells were fixed with 4% paraformaldehyde and blocked with 10% normal goat serum. And then incubated with rabbit anti-IFI30 Antibody (A05754-4, 1 ug/1x106 cells) for 30 min at 20°C. DyLight®488 conjugated goat anti-rabbit IgG (BA1127, 5-10 ug/1x106 cells) was used as secondary antibody for 30 minutes at 20°C. Isotype control antibody (Green line) was rabbit IgG (1 ug/1x106) used under the same conditions. Unlabelled sample (Red line) was also used as a control.

Submit a product review to Biocompare.com

Submit a review of this product to Biocompare.com to receive a \$20 Amazon.com giftcard! Your reviews help your fellow scientists make the right decisions. Thank you for your contribution.



Anti-IFI30 Antibody

For Research Use Only. Not for use in diagnostic procedures.