

## Anti-KCIP1 KCNIP1 Antibody

Catalog Number: A05755-1

### Overview

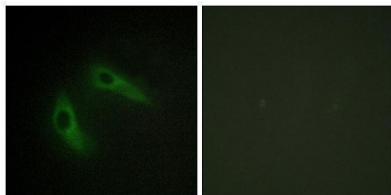
|                      |  |
|----------------------|--|
| Product Name         | Anti-KCIP1 KCNIP1 Antibody   |
| Reactive Species     | Human, Mouse, Rat  |
| Description          | Boster Bio Anti-KCIP1 KCNIP1 Antibody (Catalog# A05755-1). Tested in IHC, ICC, IF, ELISA applications. This antibody reacts with Human, Mouse, Rat.  |
| Application          | ELISA, IF, IHC, ICC  |
| Clonality            | Polyclonal   |
| Formulation          | PBS containing 50% glycerol, 0.5% stabilizing protein and 0.02% sodium azide.<br>*This antibody is supplied in a stabilized formulation.<br>Compatibility with conjugation reactions depends on the chemistry of the conjugation method used. For conjugation methods that are not compatible with the stabilizing components present in this formulation, a carrier-free antibody format is required. |
| Storage Instructions | Store at -20°C for one year. For short-term storage and frequent use, store at 4°C for up to one month. Avoid repeated freeze-thaw cycles.   |
| Host                 | Rabbit   |
| Uniprot ID           | Q9NZI2   |

### Technical Details

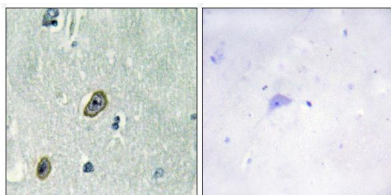
|                     |  |
|---------------------|--|
| Immunogen           | A peptide derived from human KCIP1. Immunogen sequence location: 1-50                                    |
| Isotype             | Rabbit IgG   |
| Form                | Liquid   |
| Concentration       | 0.5-1mg/ml, actual concentration vary by lot. Use suggested dilution ratio to decide dilution procedure. |
| Purification        | The antibody was purified from rabbit antiserum by affinity-chromatography using immunogen.              |
| Suggested Dilutions | IHC 1:100 - 1:300.<br>ICC/IF 1:200 - 1:1000.<br>ELISA: 1:20000.<br>Not yet tested in other applications. |

## Anti-KCIP1 KCNIP1 Antibody (A05755-1) Images

---



Immunofluorescence analysis of HeLa cells, using KCIP1 Antibody. The picture on the right is blocked with the synthesized peptide.



Immunohistochemistry analysis of paraffin-embedded human brain tissue, using KCIP1 Antibody. The picture on the right is blocked with the synthesized peptide.

### Submit a product review to [Biocompare.com](https://www.biocompare.com)

---

Submit a review of this product to [Biocompare.com](https://www.biocompare.com) to receive a \$20 Amazon.com giftcard! Your reviews help your fellow scientists make the right decisions. Thank you for your contribution.



Anti-KCIP1 KCNIP1 Antibody

For Research Use Only. Not for use in diagnostic procedures.