

Anti-PP2A-A beta PPP2R1B Antibody

Catalog Number: A05756-1

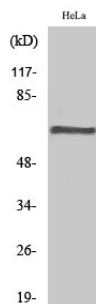
Overview

Product Name	Anti-PP2A-A beta PPP2R1B Antibody
Reactive Species	Human, Mouse, Rat
Description	Boster Bio Anti-PP2A-A beta PPP2R1B Antibody catalog # A05756-1. Tested in WB applications. This antibody reacts with Human, Mouse, Rat.
Application	WB
Clonality	Polyclonal
Formulation	Liquid in PBS containing 50% glycerol, 0.5% BSA and 0.02% sodium azide.
Storage Instructions	Store at -20°C for one year. For short term storage and frequent use, store at 4°C for up to one month. Avoid repeated freeze-thaw cycles.
Host	Rabbit
Uniprot ID	P30154

Technical Details

Immunogen	The antiserum was produced against synthesized peptide derived from human PPP2R1B. AA range:552-601
Isotype	IgG
Form	Liquid
Concentration	This antibody's concentration is >0.5mg/ml.
Purification	Immunogen affinity purified
Suggested Dilutions	WB, 1:500-1:2000

Anti-PP2A-A beta PPP2R1B Antibody (A05756-1) Images



Western Blot (WB) analysis of specific cells using PP2A-Abeta Polyclonal antibody.

Submit a product review to Biocompare.com

Submit a review of this product to Biocompare.com to receive a \$20 Amazon.com giftcard! Your reviews help your fellow scientists make the right decisions. Thank you for your contribution.



Anti-PP2A-A beta PPP2R1B Antibody