

Anti-PP2A-beta PPP2R1B Antibody

Catalog Number: A05756-3

Overview

Product Name	Anti-PP2A-beta PPP2R1B Antibody
Reactive Species	Human, Mouse, Rat
Description	Boster Bio Anti-PP2A-beta PPP2R1B Antibody catalog # A05756-3. Tested in ELISA, Flow Cytometry, IHC, WB applications. This antibody reacts with Human, Mouse, Rat.
Application	ELISA, Flow Cytometry, IHC, WB
Clonality	Polyclonal
Formulation	Liquid in PBS containing 50% glycerol, 0.5% BSA and 0.02% sodium azide.
Storage Instructions	Store at -20°C for one year. For short term storage and frequent use, store at 4°C for up to one month. Avoid repeated freeze-thaw cycles.
Host	Rabbit
Uniprot ID	P30154

Technical Details

Immunogen	Synthesized peptide derived from human PP2A-Abeta
Isotype	IgG
Form	Liquid
Concentration	1 mg/ml
Purification	The antibody was affinity-purified from rabbit antiserum by affinity-chromatography using epitope-specific immunogen.
Suggested Dilutions	Dilute the sample so that the expected range of concentrations fall within the detection range of this kit. If the expected range of concentration is unknown, a pilot test should be conducted to decide the optimal dilution ratio for your samples. Some PubMed article(s) citing the expression level of this target are as follows: Boster Bio's internal QC testing used: WB 1:500-1:2000 IHC 1:100-1:300 ICC 1:200-1:1000 ELISA 1:40000

Anti-PP2A-beta PPP2R1B Antibody (A05756-3) Images

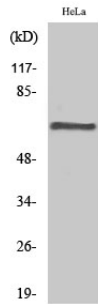


Figure 1. Western blotting validation for Anti-PP2A-beta PPP2R1B Antibody A05756-3

Western Blot (WB) analysis of specific cells using PP2A-Abeta polyclonal antibody. Electrophoresis was performed on a SDS-PAGE gel. To determine SDS-PAGE gel concentration

Submit a product review to Biocompare.com

Submit a review of this product to Biocompare.com to receive a \$20 Amazon.com giftcard! Your reviews help your fellow scientists make the right decisions. Thank you for your contribution.



Anti-PP2A-beta PPP2R1B Antibody