

Anti-IL-36G Antibody

Catalog Number: A05759

About IL36G

IL-36G is a member of the interleukin 1 cytokine family whose gene and eight other interleukin 1 family genes form a cytokine gene cluster on chromosome 2 (1). IL-36G is thought to activate the NF-kappaB pathway through IL-1 receptor family members IL-1RL2 and IL-1RAcP (2). Like the related proteins IL-36A and IL-36B, IL-36G requires post-translational processing for full agonist activity, but the cleavage mechanism is currently unknown (3). IL-36G expression is stimulated by interferon-gamma, tumor necrosis factor-alpha and interleukin 1 (4). The IL-36 cytokines have been suggested to amplify Th1 responses by enhancing proliferation and Th1 polarization of naive CD4+ T cells (5).

Overview

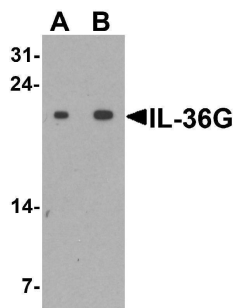
Product Name	Anti-IL-36G Antibody
Reactive Species	Human
Description	Boster Bio Anti-IL-36G Antibody (Catalog # A05759). Tested in ELISA, WB, IHC-P, IF applications. This antibody reacts with Human.
Application	ELISA, IF, IHC-P, WB
Clonality	Polyclonal
Formulation	IL-36G antibody is supplied in PBS containing 0.02% sodium azide.
Storage Instructions	IL-36G antibody can be stored at 4°C for three months and -20°C, stable for up to one year.
Host	Rabbit
Uniprot ID	Q9NZH8

Technical Details

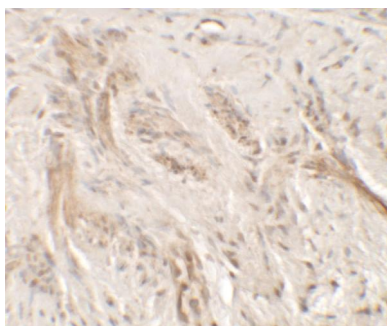
Immunogen	IL-36G antibody was raised against a 13 amino acid peptide near the carboxy terminus of human IL-36G. The immunogen is located within the last 50 amino acids of IL-36G.
Predicted Reactive Species	Bovine, Mouse
Cross Reactivity	IL-36G antibody is human specific. IL-36G antibody will not cross-react with IL-36A or IL-36B.
Isotype	IgG
Form	Liquid
Concentration	1 mg/mL
Purification	IL-36G antibody is affinity chromatography purified via peptide column.
Suggested Dilutions	IL-36G antibody can be used for detection of IL-36G by Western blot at 1 - 2 ug/ml.

Antibody validated: Western Blot in human samples; Immunohistochemistry in human samples and Immunofluorescence in human samples. All other applications and species not yet tested. Optimal dilutions for each application should be determined by the researcher.

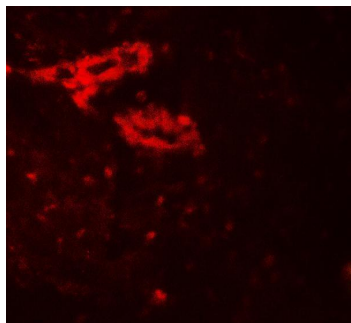
Anti-IL-36G Antibody (A05759) Images



Western blot analysis of IL-36G in human spleen tissue lysate with IL-36G antibody at (A) 1 and (B) 2 ug/ml.



Immunohistochemistry of IL-36G in human bladder tissue with IL-36G antibody at 5 ug/mL.



Immunofluorescence of IL-36G in human bladder tissue with IL-36G antibody at 20 ug/mL.

Submit a product review to [Biocompare.com](https://www.biocompare.com)

Submit a review of this product to [Biocompare.com](https://www.biocompare.com) to receive a \$20 Amazon.com giftcard! Your reviews help your fellow scientists make the right decisions. Thank you for your contribution.



Anti-IL-36G Antibody

For Research Use Only. Not for use in diagnostic procedures.