

Anti-Phospho-kappa-beta (S23) NFKBIB Antibody

Catalog Number: A05766S23

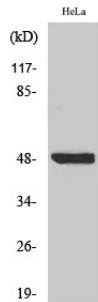
Overview

Product Name	Anti-Phospho-kappa-beta (S23) NFKBIB Antibody
Reactive Species	Human, Mouse, Rat
Description	Boster Bio Anti-Phospho-kappa-beta (S23) NFKBIB Antibody catalog # A05766S23. Tested in WB, IHC, IF, ELISA applications. This antibody reacts with Human, Mouse, Rat.
Application	ELISA, IF, IHC, WB
Clonality	Polyclonal
Formulation	Liquid in PBS containing 50% glycerol, 0.5% stabilizing protein and 0.02% sodium azide. *This antibody is supplied in a stabilized formulation. Compatibility with conjugation reactions depends on the chemistry of the conjugation method used. For conjugation methods that are not compatible with the stabilizing components present in this formulation, a carrier-free antibody format is required.
Storage Instructions	Store at -20°C for one year. For short term storage and frequent use, store at 4°C for up to one month. Avoid repeated freeze-thaw cycles.
Host	Rabbit
Uniprot ID	Q15653

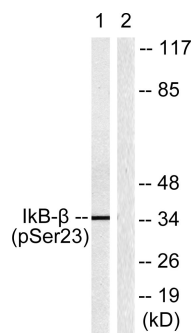
Technical Details

Immunogen	The antiserum was produced against synthesized peptide derived from human IkappaB-beta around the phosphorylation site of Ser23. AA range:8-57
Isotype	IgG
Form	Liquid
Concentration	1 mg/ml
Purification	The antibody was affinity-purified from rabbit antiserum by affinity-chromatography using epitope-specific immunogen.
Suggested Dilutions	WB 1:500-1:2000 IHC 1:100-1:300 IF 1:200-1:1000 ELISA 1:40000

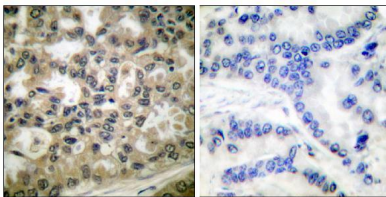
Anti-Phospho-kappa-beta (S23) NFKBIB Antibody (A05766S23) Images



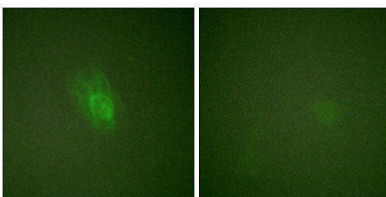
Western Blot analysis of various cells using Phospho-IkappaB-beta (S23) Polyclonal Antibody



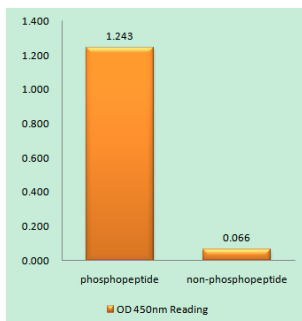
Western blot analysis of lysates from HeLa cells treated with TNF-a 20ng/ml 5', using IkappaB-beta (Phospho-Ser23) Antibody. The lane on the right is blocked with the phospho peptide.



Immunohistochemistry analysis of paraffin-embedded human lung carcinoma, using IkappaB-beta (Phospho-Ser23) Antibody. The picture on the right is blocked with the phospho peptide.



Immunofluorescence analysis of HeLa cells treated with TNF-a 20nM 15', using IkappaB-beta (Phospho-Ser23) Antibody. The picture on the right is blocked with the phospho peptide.



Enzyme-Linked Immunosorbent Assay (Phospho-ELISA) for Immunogen Phosphopeptide (Phospho-left) and Non-Phosphopeptide (Phospho-right), using IkappaB-beta (Phospho-Ser23) Antibody

Submit a product review to [Biocompare.com](https://www.biocompare.com)

Submit a review of this product to [Biocompare.com](https://www.biocompare.com) to receive a \$20 Amazon.com giftcard! Your



reviews help your fellow scientists make the right decisions. Thank you for your contribution.

Anti-Phospho-kappa-beta (S23) NFKBIB Antibody

For Research Use Only. Not for use in diagnostic procedures.